

The Baseline Survey

- Introduction into the methodology -

Results from Macedonia

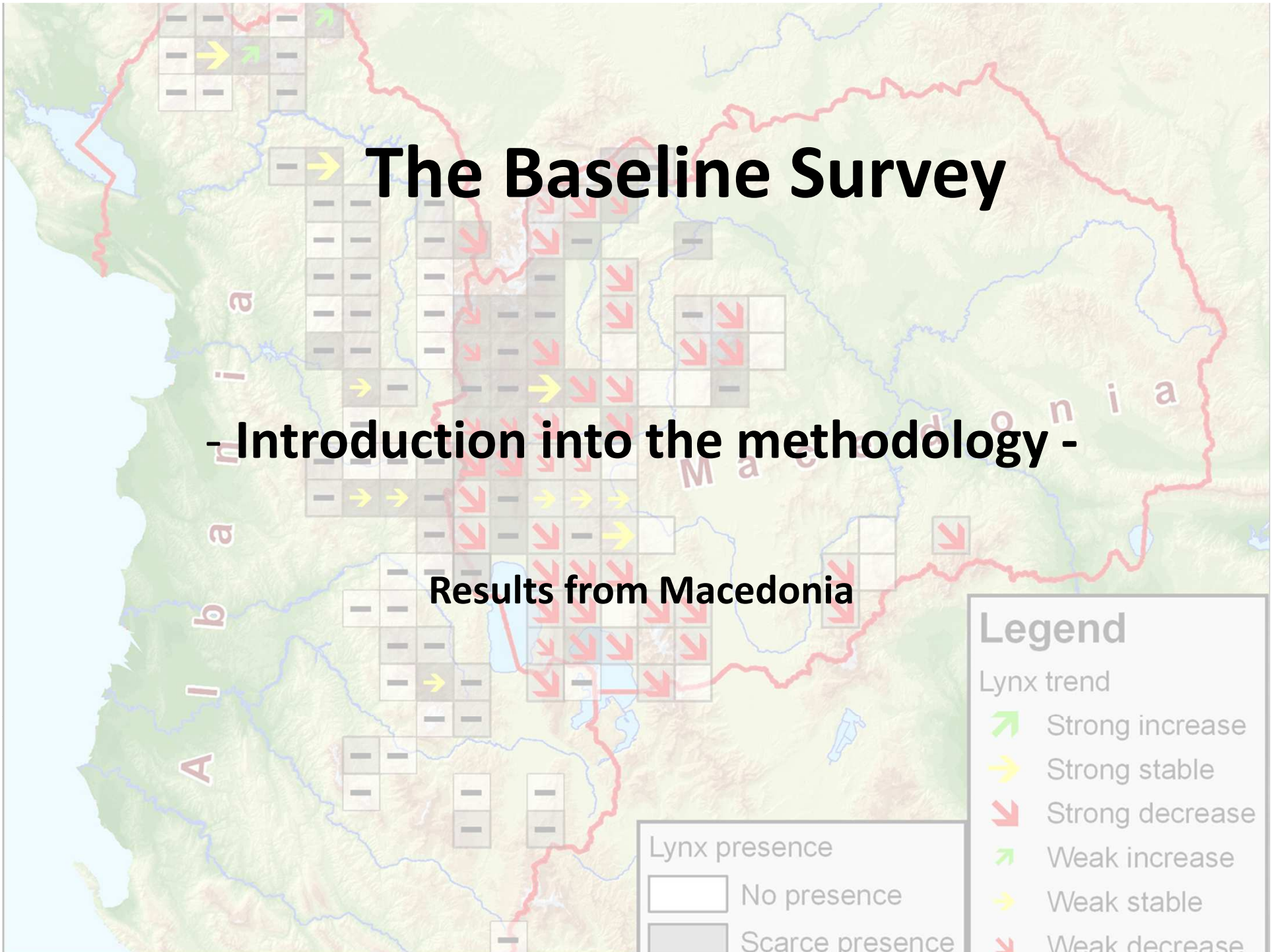
Legend

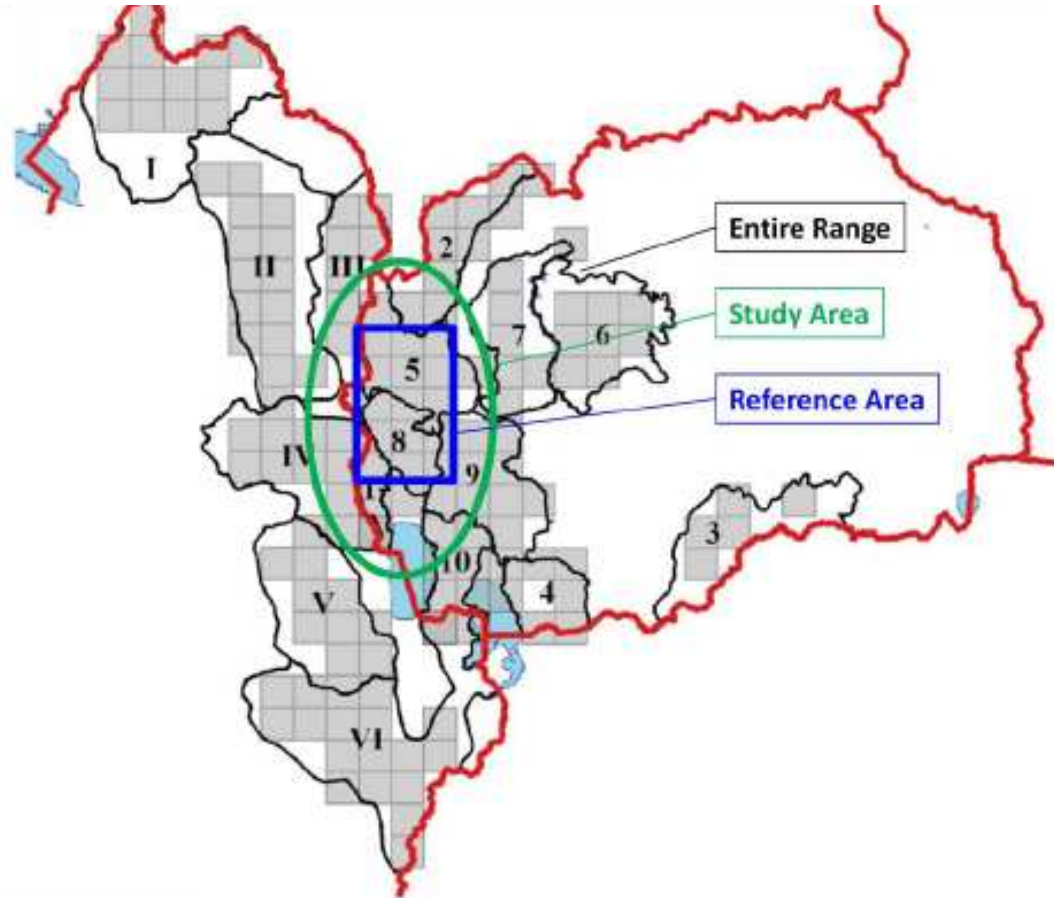
Lynx trend

- Strong increase
- Strong stable
- Strong decrease
- Weak increase
- Weak stable
- Weak decrease

Lynx presence

- No presence
- Scarce presence



Method**Results****Conclusions**

Level I (entire range, sub-units will be prioritised) – 10·10 km grid cells for the occupancy study;

Level II (study area) – area for the radio-telemetry work;

Level III (reference area) – area for the systematic camera trapping with capture-recapture estimation of density.

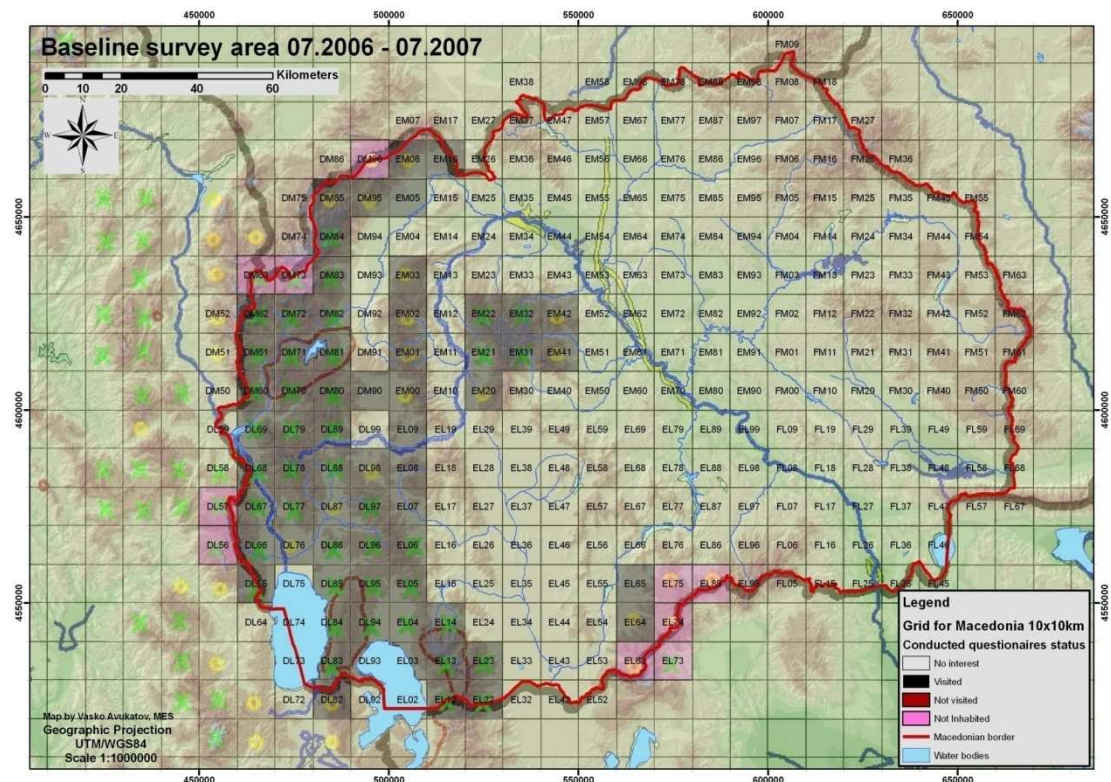
Methodology for Balkan Lynx Baseline Survey

Purpose:

To systematically collect local knowledge on lynx & potential prey, livestock husbandry and human-large carnivores conflicts

Defining the study area

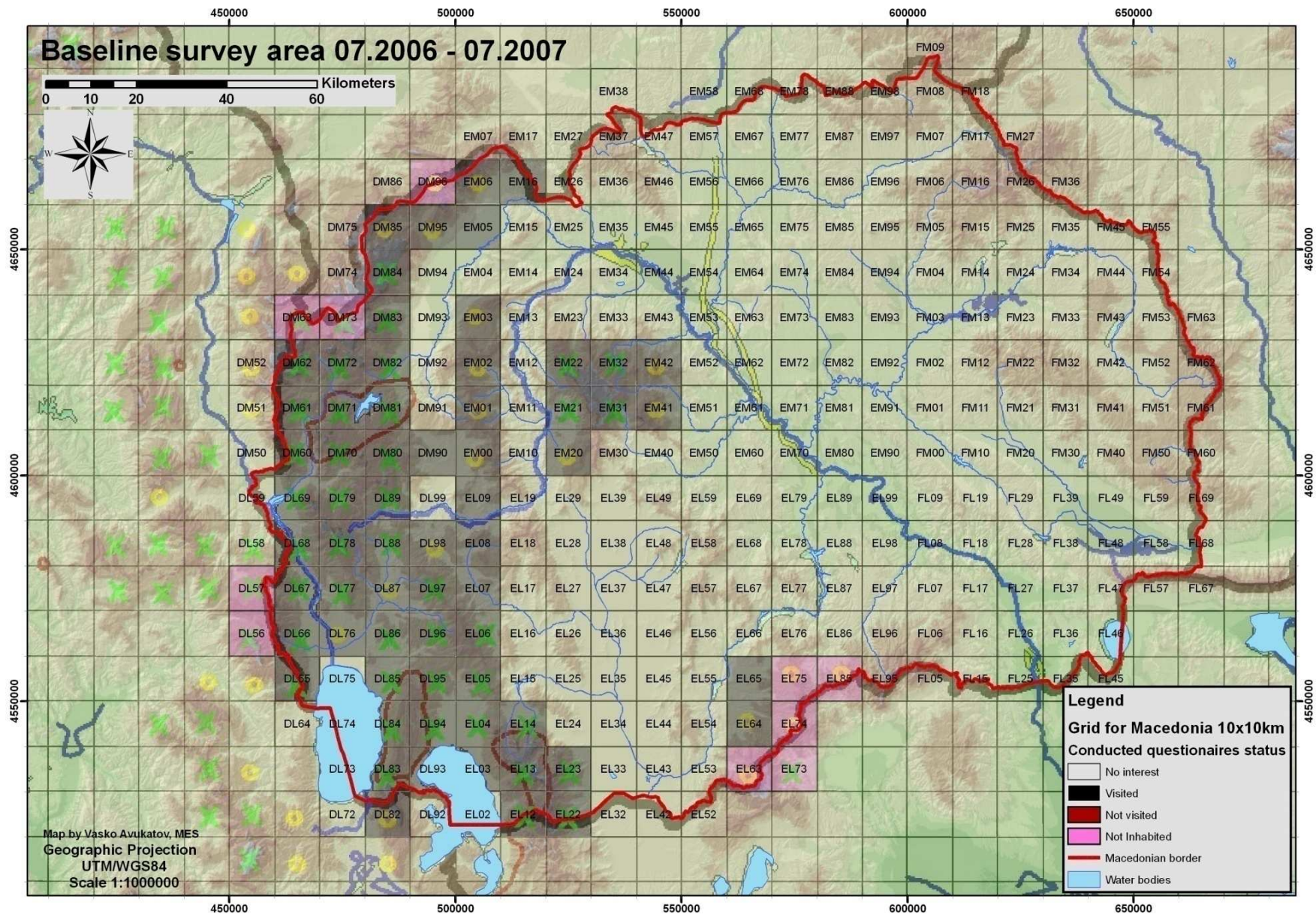
- Maps overlaid with 10x10 km grid
- Study area defined by available information on lynx
- At least 1 village randomly selected per grid cell



Studied area



Studied area



Questionnaire

- Direct (face to face) interviews
- Different target groups (hunters, game wardens, foresters, shepherds/farmers, shop-owners, random people)
- Period of survey: August 2006 – July 2007



Method

Results

Conclusions

1. Distribution of species

We are interested in collecting information on the distribution of a range of species in Macedonia / Albania

			Roe deer	Red deer	Chamois	Wild boar	Hare	Capercaillie / grouse	Red fox	Jackal	Wolf	Stray dogs	Wild cat	Lynx	Bear	No data
1.1	Is it present in your area?	yes/no														
1.2	How common is it?	1-3														
1.3	Are there more now compared to 5 years ago?	+/-/-														
1.4	Have any been found dead?	personal/other person p/o														
1.5	When was the last one found dead?	time period														
1.6	Have any been killed?	personal/other person p/o														
1.7	When was the last one killed?	time period														
1.8	Have any been observed?	personal/other person p/o														
1.9	When was the last one observed?	time period														

Method

Results

Conclusions

2. Conflicts

These questions reflect the general situation in the area of the village

Wild animals can sometimes cause problems for people. We are interested in collecting information on any conflicts that occur between the following species and people

	?		Lynx	Bear	Wolf	Jackal	Red fox	Wild cat	Stray dogs	Unknown species	Doesn't know
2.1	Do you know if any of the following domestic animals been killed in your area in the last 12 months?										
	2.1.1 - sheep	yes/no									
	2.1.2 - goats	yes/no									
	2.1.3 - pigs	yes/no									
	2.1.4 - cattle	yes/no									
	2.1.5 - dogs	yes/no									
	2.1.6 - chickens / ducks / geese	yes/no									
	2.1.7 - donkeys	yes/no									
	2.1.8 - horses	yes/no									
	2.1.9 - beehives	yes/no									
2.2	If YES in which seasons has the depredation	winter /spring /summer									

3. Animal husbandry details

Do you have any domestic animals or beehives?

If YES

3.1	How many of the following animals do you have at present?	Number
	3.1.1 - sheep	
	3.1.2 - goats	
	3.1.3 - pigs	
	3.1.4 - cattle	
	3.1.5 - chickens	
	3.1.6 - donkeys / mules	
	3.1.7 - horses	
3.2	How many of the following domestic animals have you personally lost to depredation during the last 12 months?	number /predator /notes
	3.1.1 - sheep	
	3.1.2 - goats	
	3.1.3 - pigs	
	3.1.4 - cattle	
	3.1.5 - dogs	
	3.1.6 - chickens / ducks / geese	
	3.1.7 - donkeys / mules	
	3.1.8 - horses	

Str

aire

4. Socio

- Sch
- sho

5. Infor

- Per
- per

6. Villag

- Nar

4. Socio-economic environment

	Present	15 years ago
4.1 Is there a school in the village? (yes/no)		
4.2 Is it possible to buy gasoline in/near the village? (yes/no)		
4.3 How far away is the closest doctor? (km)		
4.4 What is the population of your village? (number)		
4.5 How many houses are occupied? (% of total number)		
4.6 Is there a bus service? (yes/no)		
4.7 a Is there a shop in the village?		
4.7 b Is there a cathering fscility in the village?		

vice,

5. Informant

5.1 Are you a permanent / seasonal resident?	
5.2 How long have you lived in this village?	
5.3 Your name?	
5.4 Occupation?	
5.5 Sex?	
5.6 Age?	
5.7 General impressions of informant (Notes)	

n and

6. Village

6.1 Village name	
6.2 GPS location	
6.3 General impression of village *	

* e.g. % abandoned houses

Access – road for cars (4x4 only or not), road quality (asphalt or dirt), bus service etc.

Date: _____

Method

Results

Conclusions

Sample size: 553 interviews in 149 villages in Macedonia

Македонско еколошко друштво - [Листа на интервјуа]

Основни податоци Прашалник Интервју

Прашалник: РИС од: 01.01.2006 до: 14.01.2008

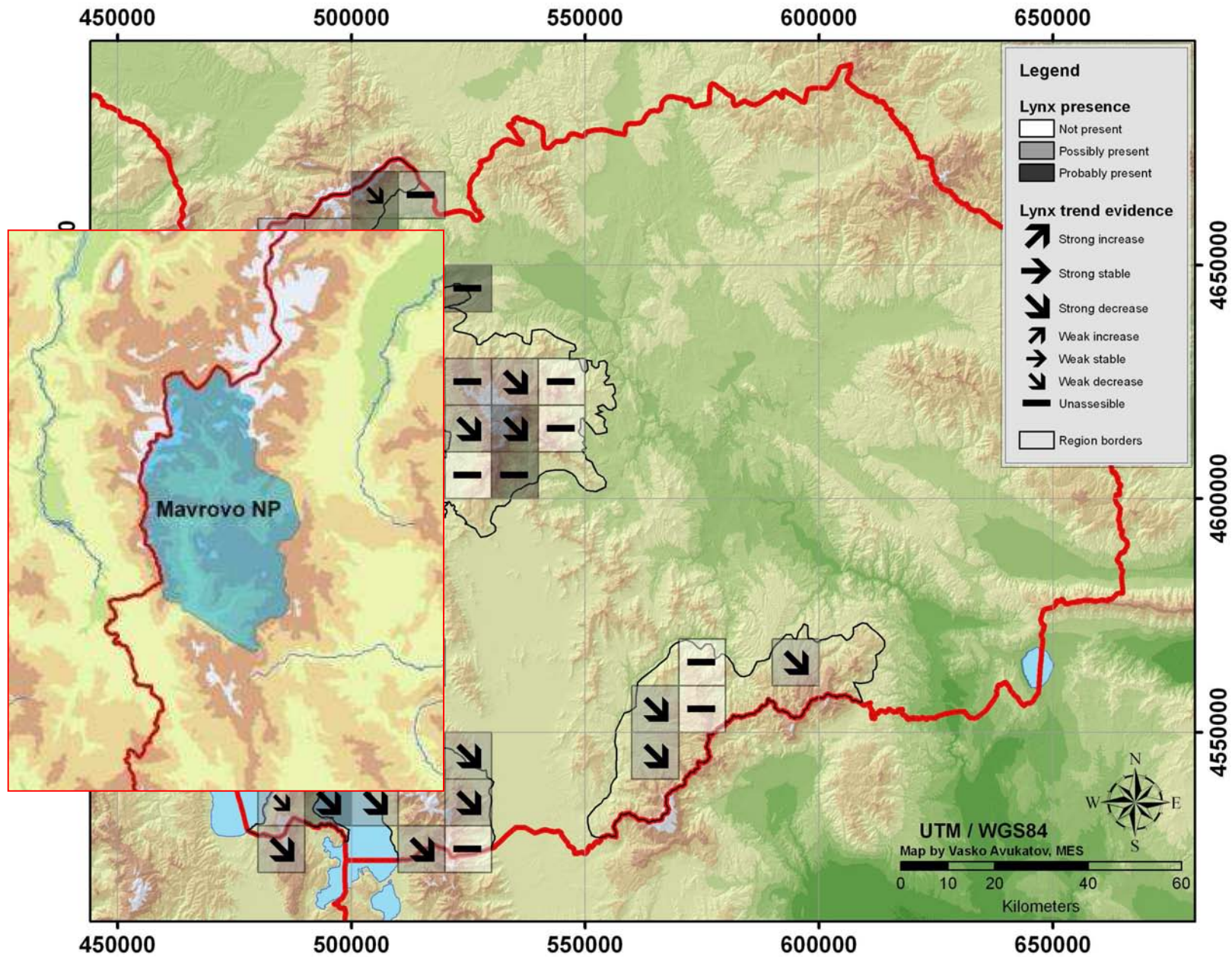
ID	Рејтинг	Регион	Планина	Место	MHB	GPS	Квадрант	Датум	Име	Презиме	Дат. раѓ.
1	2	Јабланица	Јабланица	Вевчани	875	0465862/4565539	DL66	21.07.2006	Витомир	Дуцкиноски	01.01.1972
2	4	Јабланица	Јабланица	Вевчани	875	0465862/4565539	DL66	12.07.2006	Радован	Димитриевски	01.01.1936
3	3	Јабланица	Јабланица	Октиси	800	0466678/4564609	DL66	12.07.2006	Ранко	Ашталковски	01.01.1956
4	3	Јабланица	Јабланица	Октиси	800	0466678/4564609	DL66	12.07.2006	Мустафа	Чољски	01.01.1956
5	2	Јабланица	Јабланица	Мали Влај	1000	0467848/4552114	DL65	12.07.2006	Алошкоски	Тане	01.01.1965
6	3	Јабланица	Јабланица	Вишни	1074	0466273/4560300	DL66	12.07.2006	Коста	Шеќеровски	01.01.1944
7	2	Јабланица	Јабланица	Вишни	1074	0466273/4560300	DL66	12.07.2006	Вељо	Марковски	01.01.1936
8	1	Јабланица	Јабланица	Октиси	800	0466678/4564609	DL66	12.07.2006	Лавдрим	Метовски	01.01.1972
9	2	Јабланица	Јабланица	Вишни	1074	0466273/4560300	DL66	12.07.2006	Перо	Симоновски	01.01.1970
10	2	Јабланица	Јабланица	Вишни	1074	0466273/4560300	DL66	12.07.2006	Крсте	Трповски	01.01.1800
11	2	Јабланица	Јабланица	Радолишта	740	0468349/4557036	DL65	12.07.2006	Фатмир	Маљо	01.01.1965
12	2	Јабланица	Јабланица	Радолишта	740	0468349/4557036	DL65	12.07.2006	Илми	Маљо	01.01.1953
13	3	Маврово - Бистра	Дешат	Битуше	1140	0464891/4607378	DM60	04.08.2006	Спасе	Никудиновски	01.01.1946
14	2	Маврово - Бистра	Дешат	Битуше	1140	0464891/4607378	DM60	01.08.2006	Никола	Синџировски	01.01.1933
15	3	Маврово - Бистра	Дешат	Битуше	1140	0464891/4607378	DM60	05.08.2006	Гоко	Илкоски	01.01.1956
16	3	Маврово - Бистра	Дешат	Битуше	1140	0464891/4607378	DM60	03.08.2006	Боре	Божиновски	01.01.1957
17	2	Маврово - Бистра	Дешат	Ростуше	802	0466161/4606636	DM60	06.08.2006	Фикрија	Сулејмани	01.01.1931
18	3	Маврово - Бистра	Дешат	Велебрдо	890	0466482/4607290	DM60	07.11.2006	Асан	Асани	01.01.1974
19	2	Маврово - Бистра	Дешат	Ростуше	802	0466161/4606636	DM60	06.08.2006	Јован	Симоновски	01.01.1936
20	2	Јабланица	Јабланица	Радолишта	740	0468349/4557036	DL65	12.07.2006	Али	Хоџа	01.01.1973
21	1	Јабланица	Јабланица	Подгорци	893	0466432/4567427	DL66	12.07.2006	Ристо	Достиновски	01.01.1950
22	2	Јабланица	Јабланица	Подгорци	893	0466432/4567427	DL66	12.07.2006	Идриз	Ајдароски	01.01.1942
23	2	Јабланица	Јабланица	Подгорци	893	0466432/4567427	DL66	12.07.2006	Рушит	Адемоски	01.01.1982
24	1	Јабланица	Јабланица	Подгорци	893	0466432/4567427	DL66	12.07.2006	Фахродин	Бајрамовски	01.01.1982
25	1	Јабланица	Јабланица	Подгорци	893	0466432/4567427	DL66	12.07.2006	Берат	Џемајлоски	01.01.1942
26	3	Јабланица	Јабланица	Вевчани	875	0465862/4565539	DL66	11.07.2006	Благоја	Дејкоски	01.01.1936
27	1	Јабланица	Јабланица	Вевчани	875	0465862/4565539	DL66	11.07.2006	Бебековски	Гаврил	01.01.1946
28	1	Јабланица	Јабланица	Вевчани	875	0465862/4565539	DL66	21.07.2006	Мирослав	Бебековски	01.01.1971
29	2	Јабланица	Јабланица	Вевчани	875	0465862/4565539	DL66	11.07.2006	Крсте	Дејкоски	01.01.1978
30	1	Јабланица	Јабланица	Вевчани	875	0465862/4565539	DL66	11.07.2006	Спасе	Калаџиќески	01.01.1800

643 of 643 records found

Method

Results

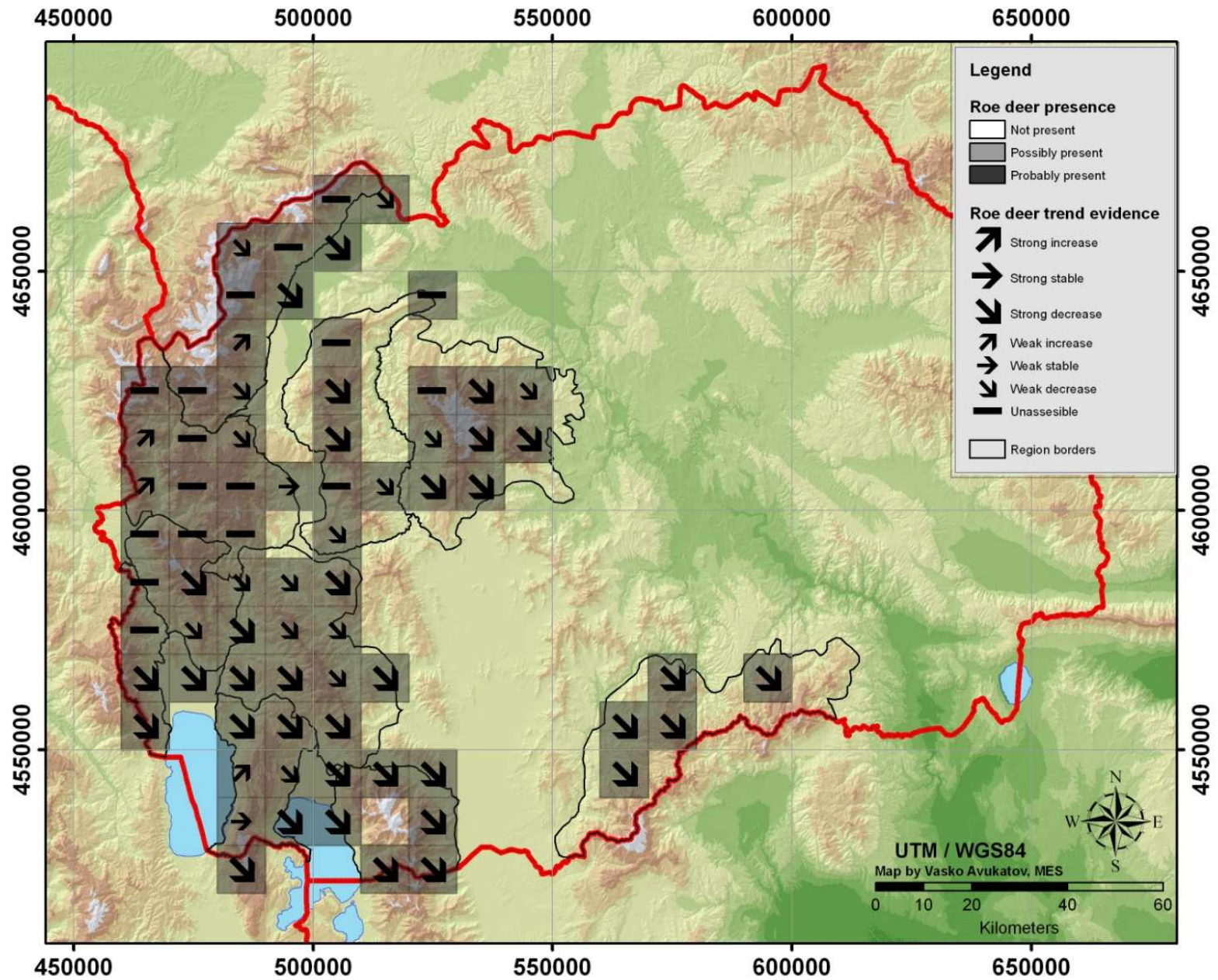
Conclusions

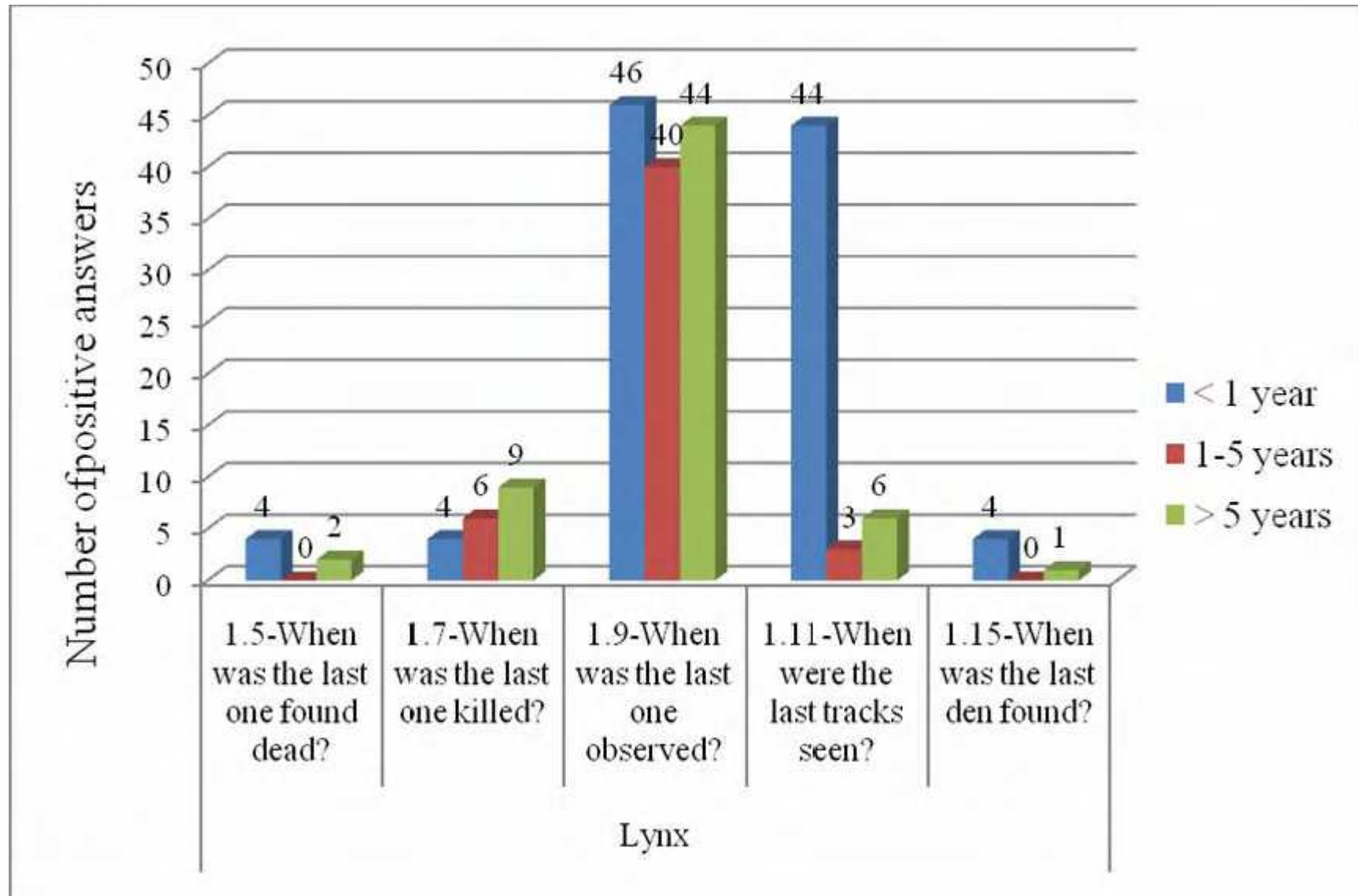


Method

Results

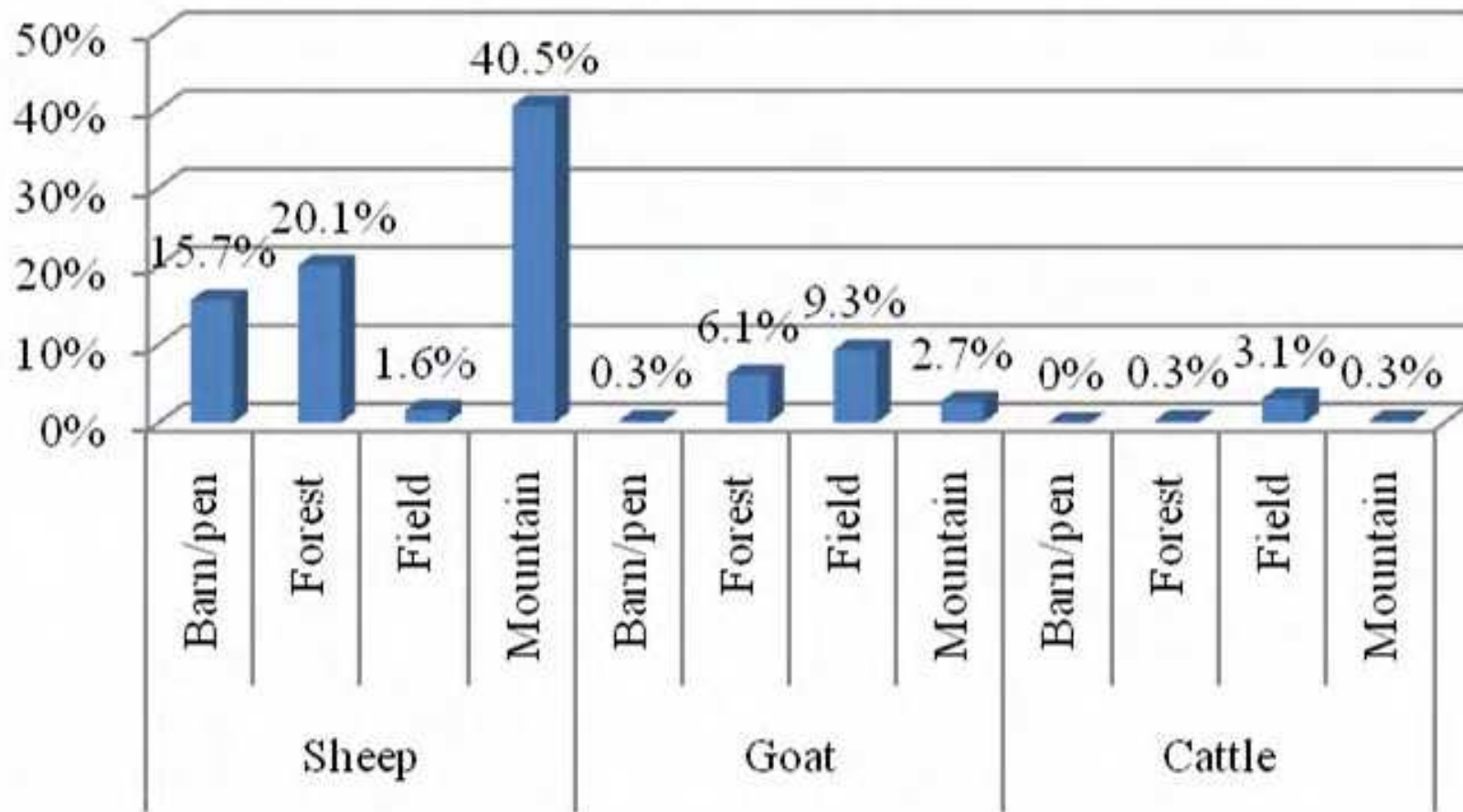
Conclusions



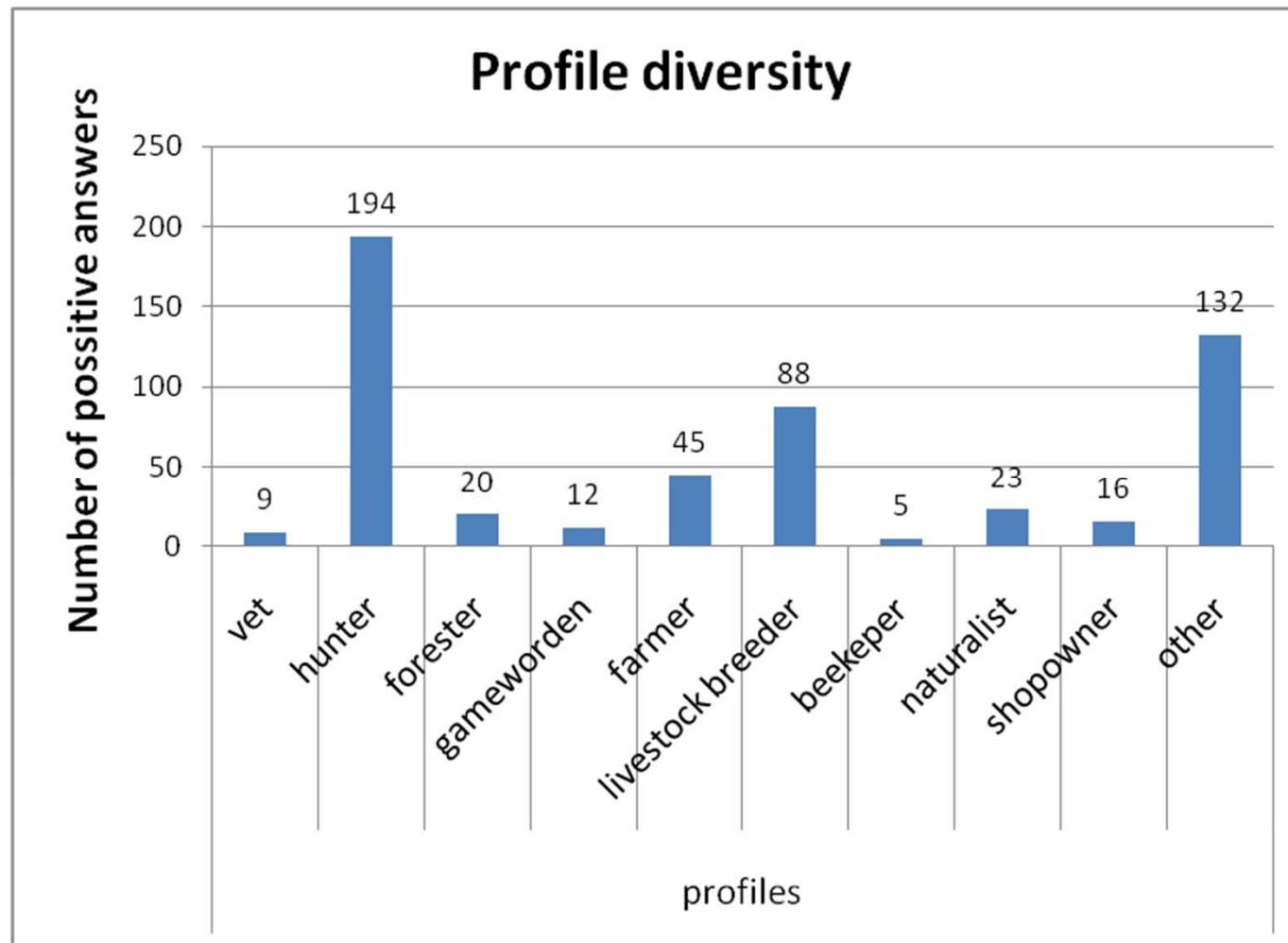


Conflicts

Place of wolf depredation



Profiles incorporated in Macedonia



“By post”-questionnaires

- 128 specially adopted questionnaires are posted to all veterinary stations in Macedonia
- 59 specially adapted questionnaires are posted to all Hunter's Associations in Macedonia
- Very limited result obtained in MK

- Reporting on the main results
- Statistical overview of the most important question derived from the general public - LEK
- Rising public awareness for lynx and its prey (dissemination of promotional material)
- Category 3 data, needed for a safe start of the wider scientific research
 - Camera-trapping
 - Radio-telemetry
- Repetitive concept – see the changes in people's opinion on ecology and attitude