

Bize-Berdhet



Qarrishte



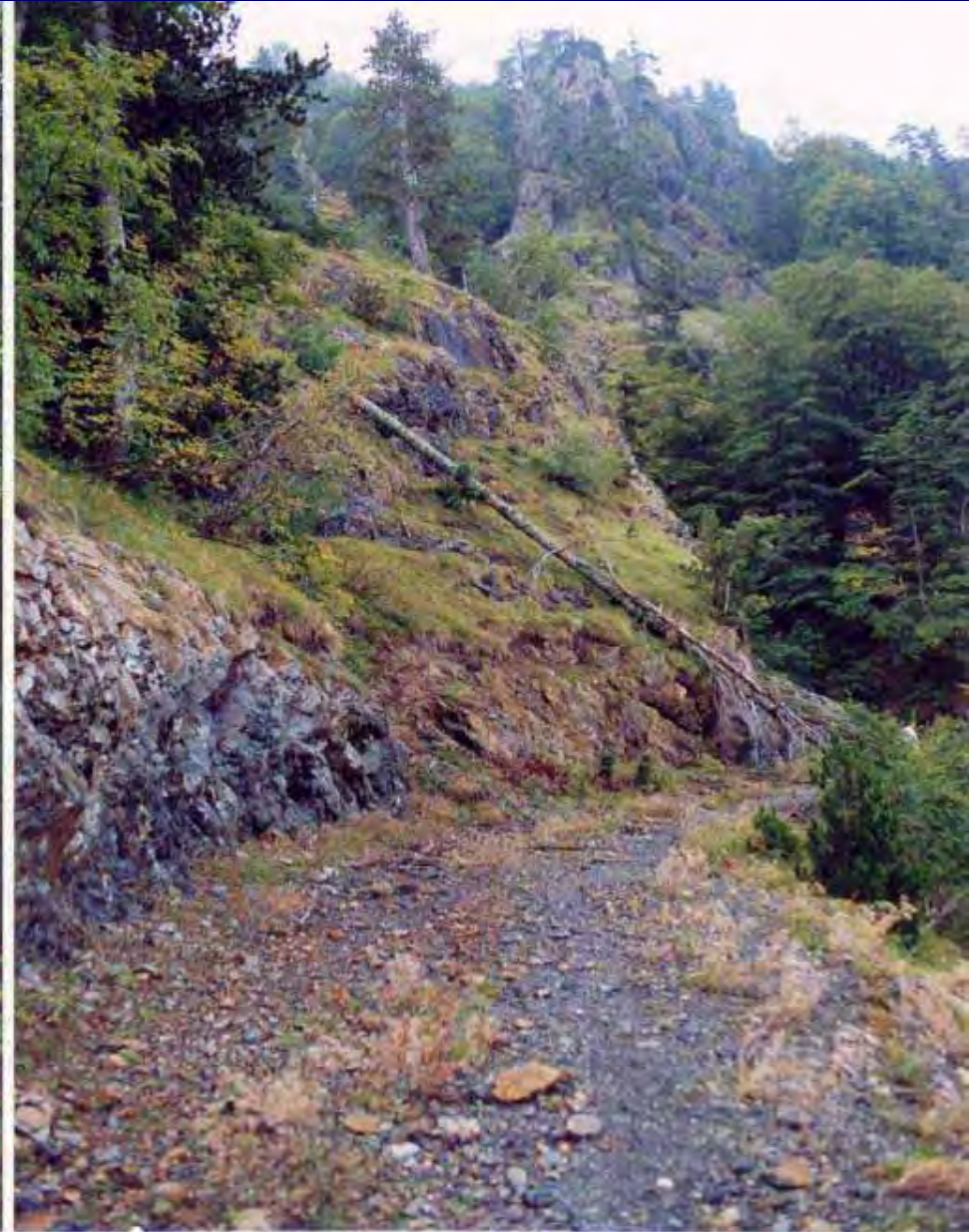
Rrajca SNR



Jabllanica



Stravaj



Stravaj-Zavaline



Germanj-Shelegure



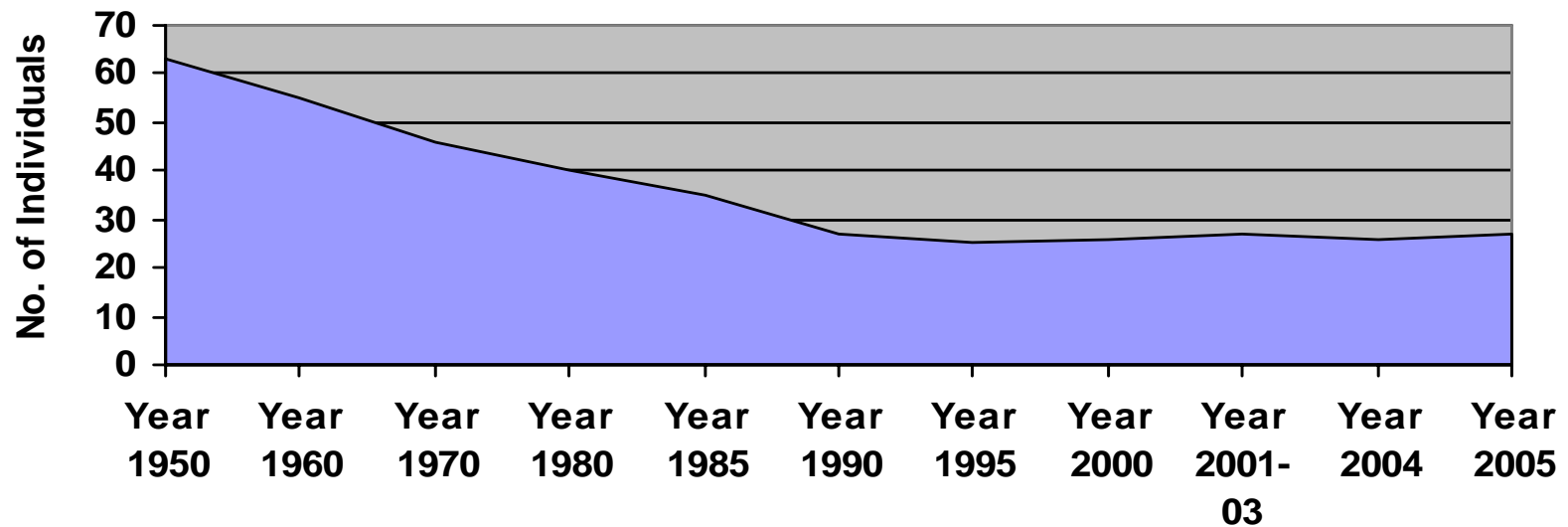
Population size and trend

Trend of the Lynx population in Albania

| Year | Year | Year | Year | Year | Year | Year | Year | Year | Year | Year | Year |
|------|------|------|------|------|------|------|------|------|------|------|------|
| 1950 | 1960 | 1970 | 1980 | 1985 | 1990 | 1995 | 2000 | 2001 | 2002 | 2004 | 2005 |
| 63 | 55 | 46 | 40 | 35 | 27 | 25 | 26 | 27 | 27 | 26 | 27 |

Source: GDFP

Trends of the Lynx population in Albania
(Years 1950-2005)



Causes of Decline

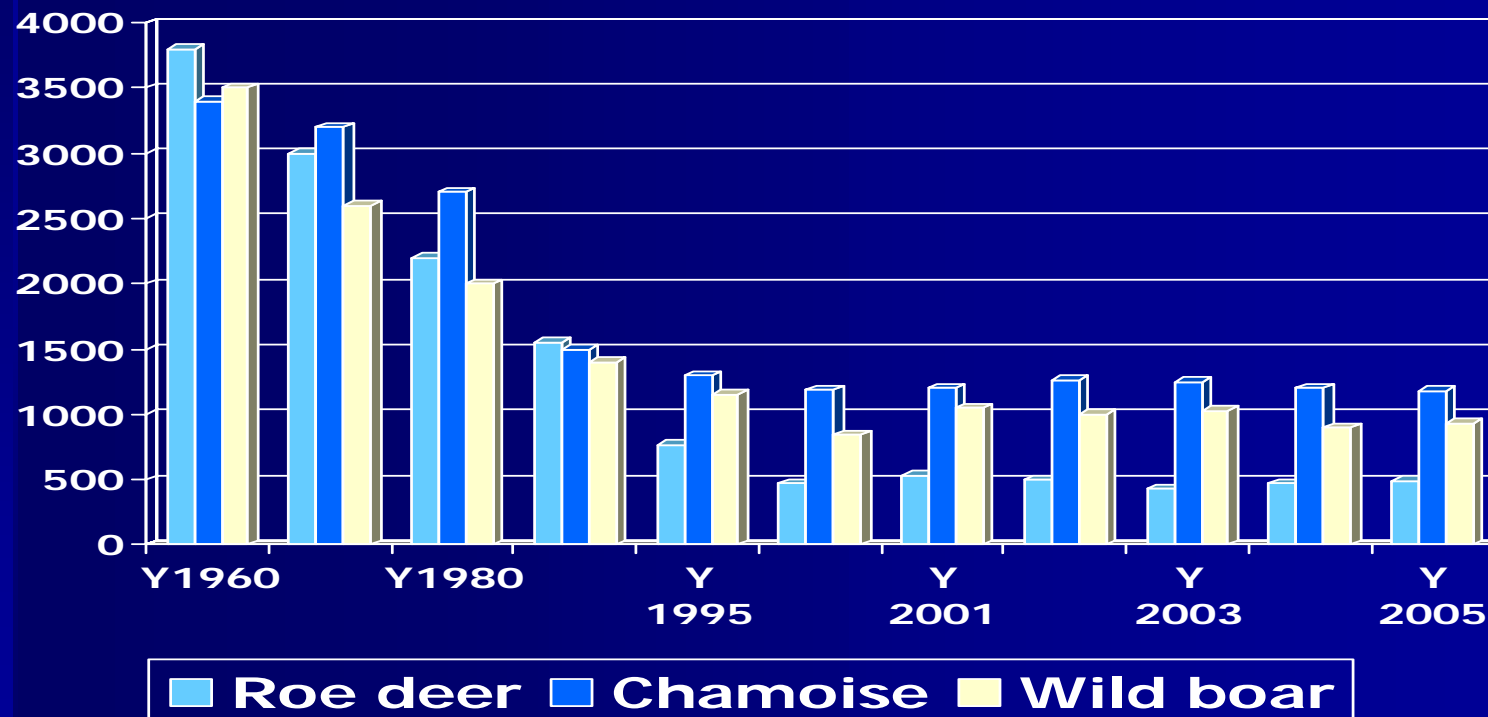
- Habitat loss and fragmentation,
- Decline of natural prey (large ungulates, such as roe deer, chamoise etc.)
- Lack of wildlife management in forestry sector
- Animal disturbance, and
- Animal killing

Habitat loss and degradation



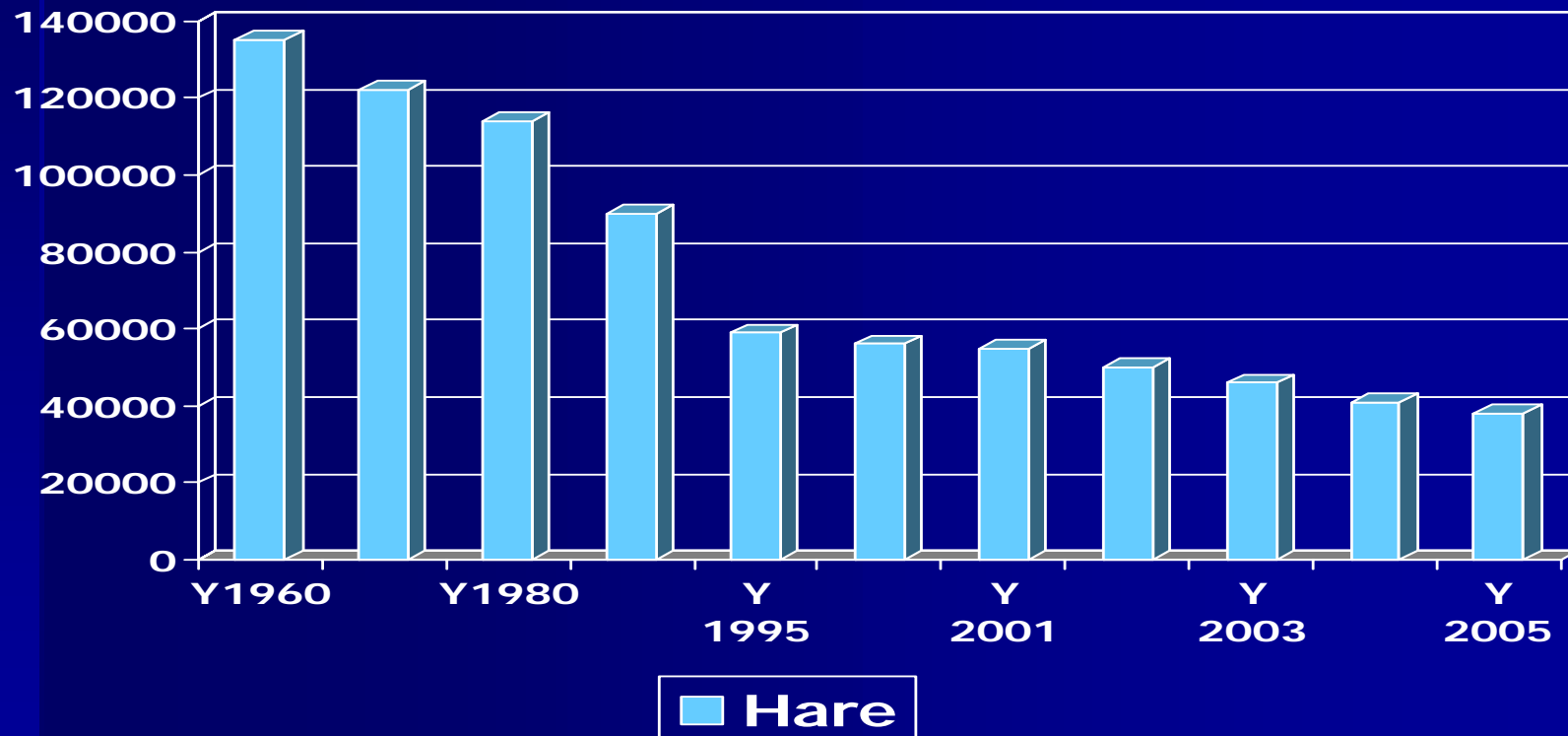
Decline of natural prey

| | Y 1960 | Y 1970 | Y 1980 | Y 1990 | Y 1995 | Y 2000 | Y 2001 | Y 2002 | Y 2003 | Y 2004 | Y 2005 |
|-----------|-----------|-----------|-----------|-----------|-----------|-----------|-----------|-----------|-----------|-----------|-----------|
| Roe deer | 3800 | 3000 | 2200 | 1550 | 770 | 470 | 530 | 500 | 430 | 470 | 490 |
| Chamoise | 3400 | 3200 | 2700 | 1500 | 1300 | 1190 | 1200 | 1260 | 1250 | 1200 | 1180 |
| Wild boar | 3500 | 2600 | 2000 | 1400 | 1150 | 846 | 1050 | 1000 | 1030 | 900 | 930 |



Decline of natural prey (2)

| | Y 1960 | Y 1970 | Y 1980 | Y 1990 | Y 1995 | Y 2000 | Y 2001 | Y 2002 | Y 2003 | Y 2004 | Y 2005 |
|------|--------|--------|--------|--------|--------|--------|--------|--------|--------|--------|--------|
| HARE | 135000 | 122000 | 114000 | 90000 | 59000 | 56000 | 55000 | 50000 | 46000 | 41000 | 38000 |

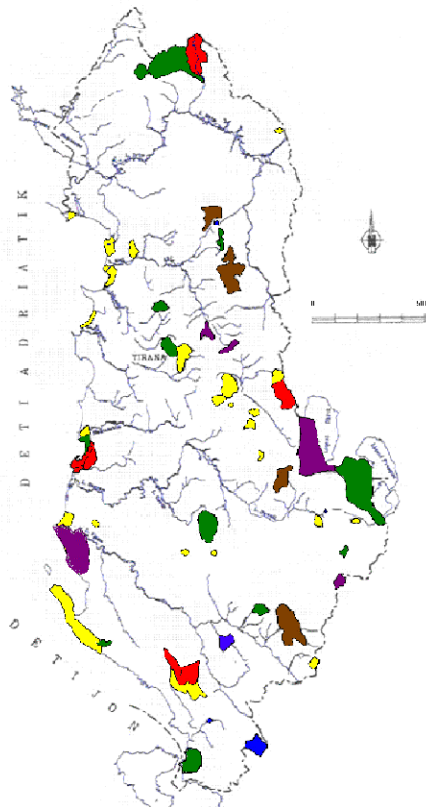


Animal killing



Lynx range and protected areas

Map of the Existing Protected Areas of Albania



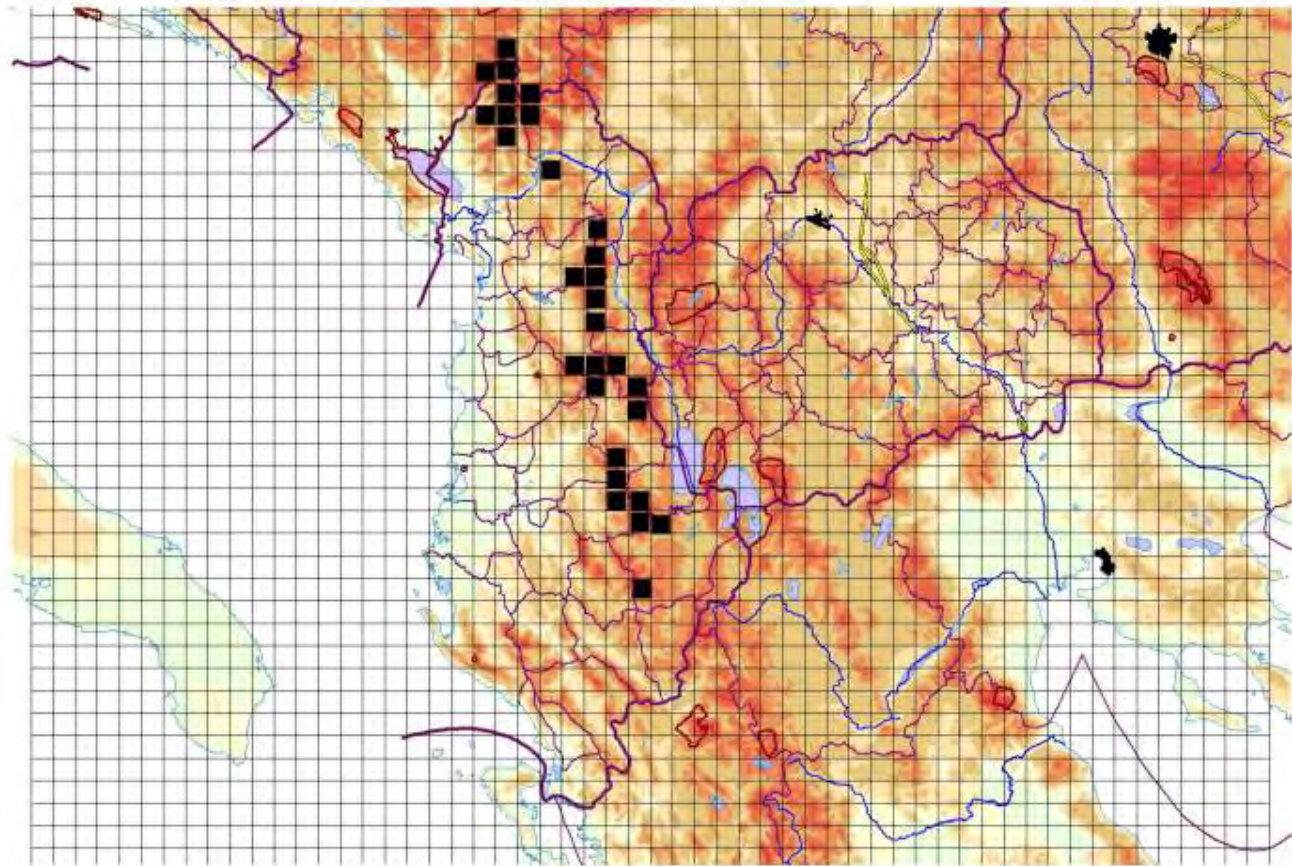
Legend

- | | | |
|-----------------------|------------------------|-----------------------------|
| Strict Nature Reserve | Nature Monument | Landscape Protected Area |
| National Park | Managed Nature Reserve | Multiple Use Protected Area |

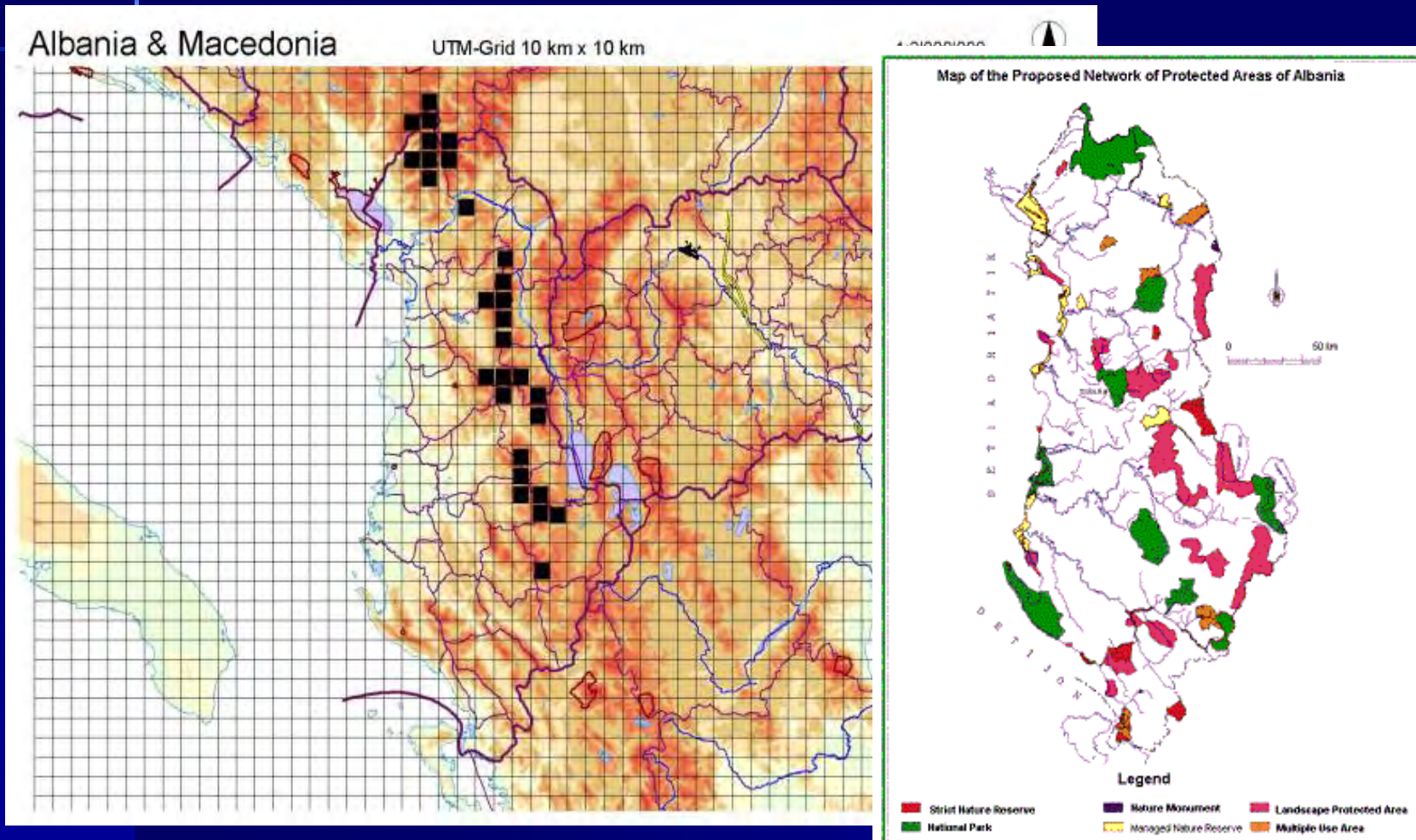
Albania & Macedonia

UTM-Grid 10 km x 10 km

1:2'000'000



Lynx range and protected areas



The need for a Lynx Recovery Action Plan (1)

Main issues:

- the identification of the sites that are critical for the species to be taken under protection and appropriate management;
- increase food availability for the lynx (protection and management of wild prey, particularly ungulates such as roe deer, chamois and wild boar)
- institutional and legislation arrangements and enforcement;

The need for a Lynx Recovery Action Plan (cont. 2)

- publication of raising awareness materials and organisation of campaigns, focused particularly on the villages surrounding Lynx areas;
- considering the compensation policy by the state authority for the farmers, in the cases of damages caused by the Lynx;
- Increase coordination and cooperation with other countries, particularly with neighbouring countries

Thank you for your attention!