



# Lynx in Albania

MAVROVO, Macedonia  
15 November, 2005

Ferdinand Bego, Mammalogist. TU- Museum of Natural Sciences  
Haki Zoto-GDFP, Game specialist  
Spase Shumka, PPNEA

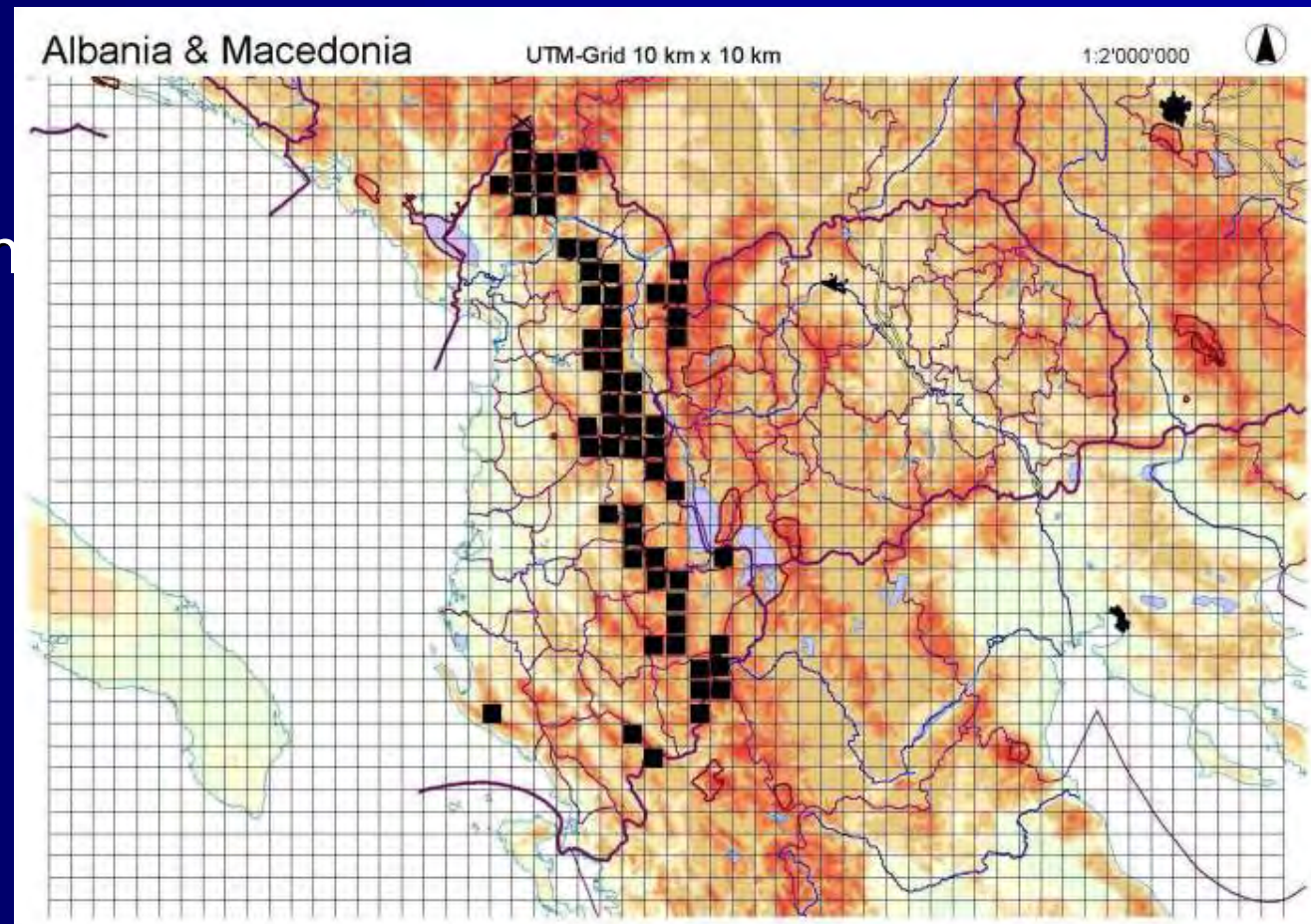
# Lynx coloration



# Lynx Distribution (before 1950)

Distribution range:  
about 6000 sqkm  
Estimated population  
about 60 individuals

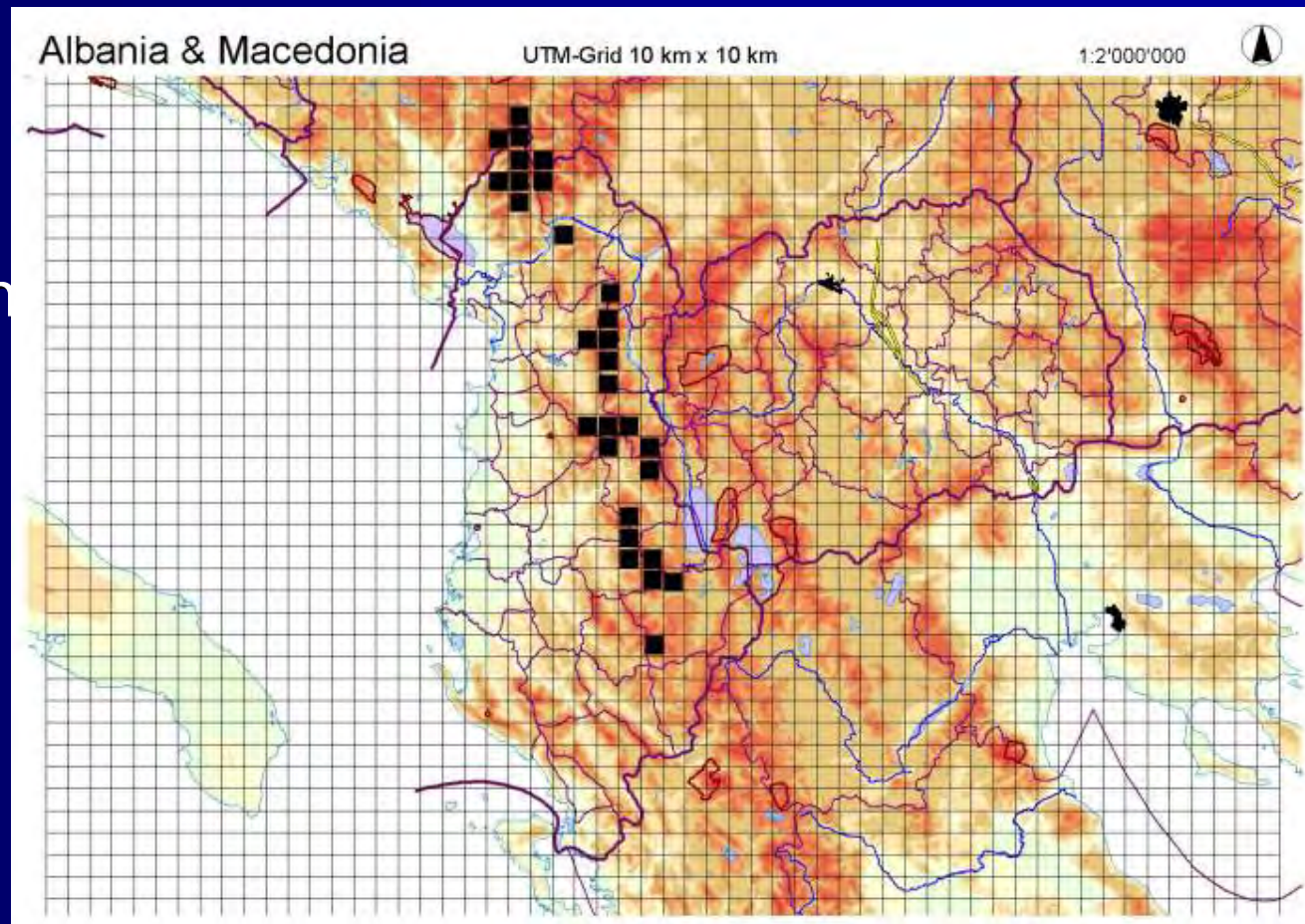
- Northern Albania
- Northeast
- Central North
- Central South
- Southeast
- Southwest



# Lynx Distribution (at present)

Distribution range:  
about 3000 sqkm  
Estimated population  
about 25 individuals

- Northern Albania
- Central North
- Central South
- Southeast



# Lynx habitats



# Livadhi harushes-Vermosh



# Vermosh



# Lepushe-Vermosh





# Thethi NP



# Valbona NP



# Liqeni Zi-Bulqize



# Liqeni Zi-Martanesh



# Bize-Martanesh



# Bize-Berdhet



# Qarrishte



# Rrajca SNR

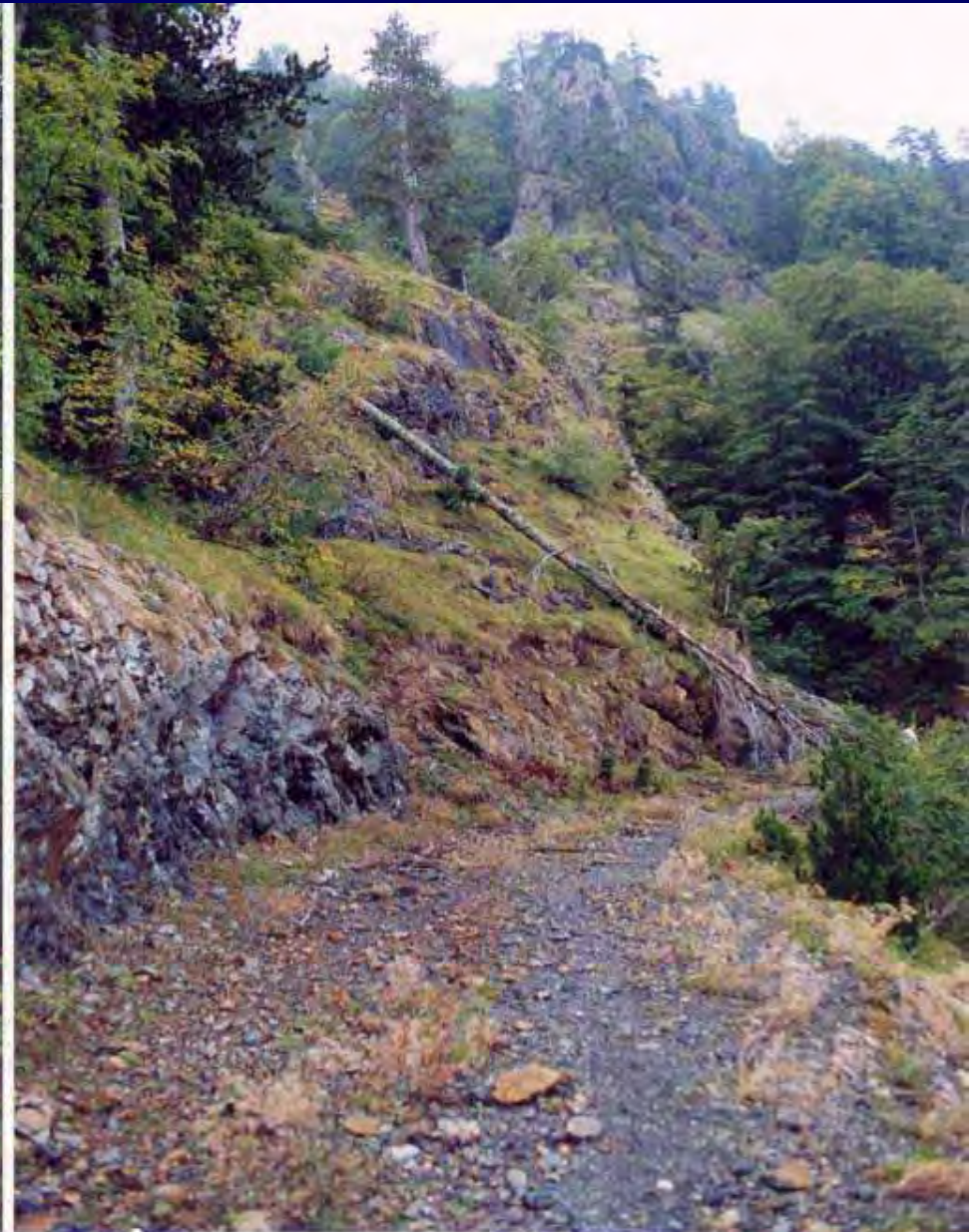




# Jabllanica



# Stravaj



# Stravaj-Zavaline



# Germenj-Shelegure



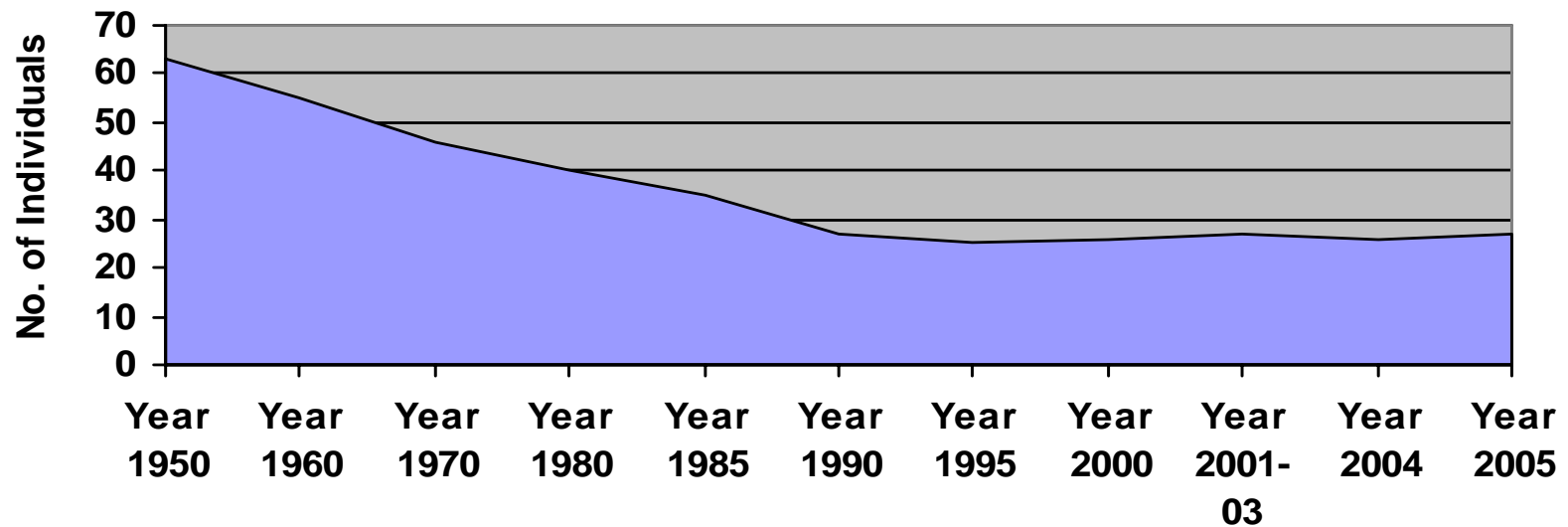
# Population size and trend

## Trend of the Lynx population in Albania

Year	Year	Year	Year	Year	Year	Year	Year	Year	Year	Year	Year
1950	1960	1970	1980	1985	1990	1995	2000	2001	2002	2004	2005
63	55	46	40	35	27	25	26	27	27	26	27

Source: GDFP

Trends of the Lynx population in Albania  
(Years 1950-2005)



# Causes of Decline

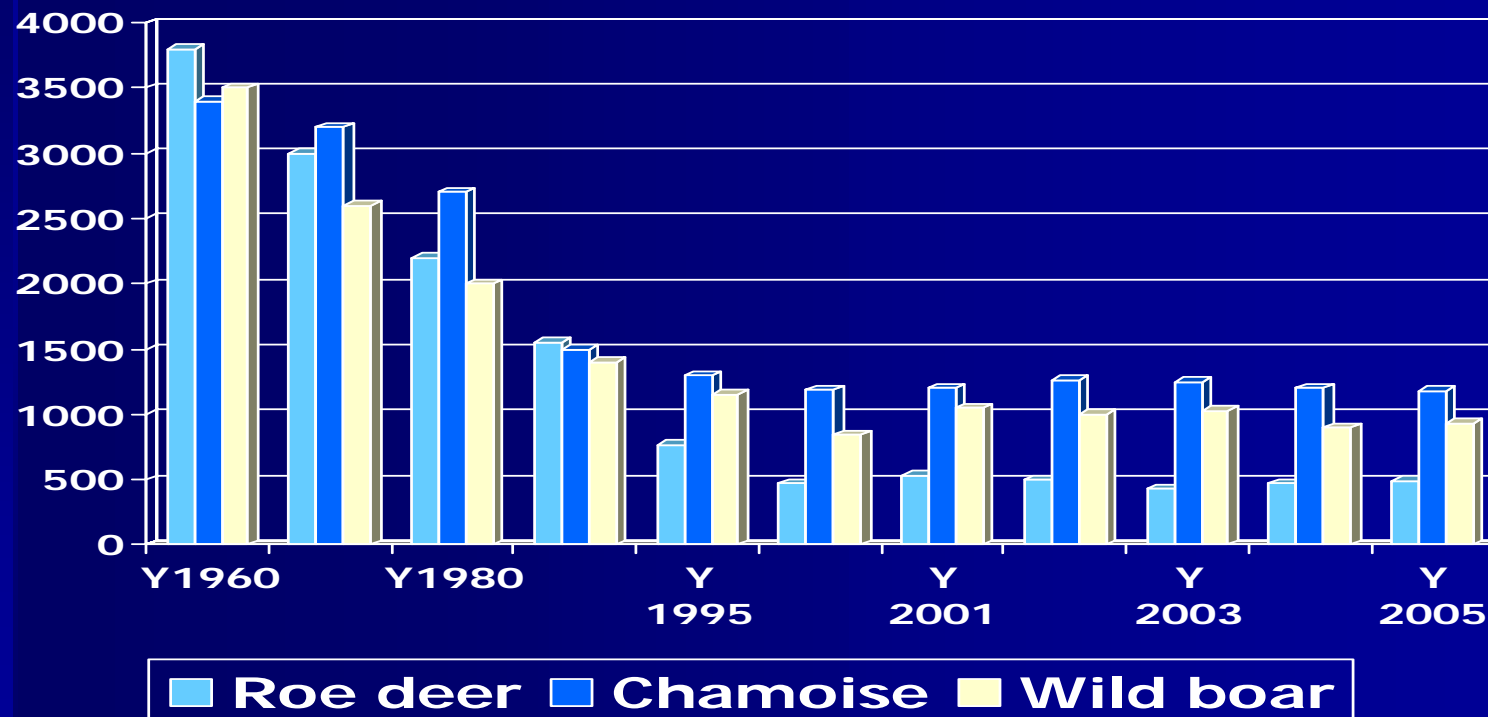
- Habitat loss and fragmentation,
- Decline of natural prey (large ungulates, such as roe deer, chamoise etc.)
- Lack of wildlife management in forestry sector
- Animal disturbance, and
- Animal killing

# Habitat loss and degradation



# Decline of natural prey

	Y 1960	Y 1970	Y 1980	Y 1990	Y 1995	Y 2000	Y 2001	Y 2002	Y 2003	Y 2004	Y 2005
Roe deer	3800	3000	2200	1550	770	470	530	500	430	470	490
Chamoise	3400	3200	2700	1500	1300	1190	1200	1260	1250	1200	1180
Wild boar	3500	2600	2000	1400	1150	846	1050	1000	1030	900	930





# Decline of natural prey (2)

	Y 1960	Y 1970	Y 1980	Y 1990	Y 1995	Y 2000	Y 2001	Y 2002	Y 2003	Y 2004	Y 2005
HARE	135000	122000	114000	90000	59000	56000	55000	50000	46000	41000	38000

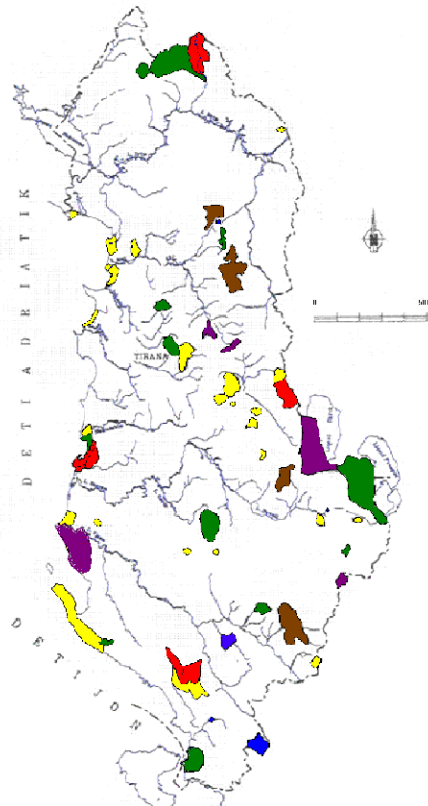


# Animal killing



# Lynx range and protected areas

Map of the Existing Protected Areas of Albania



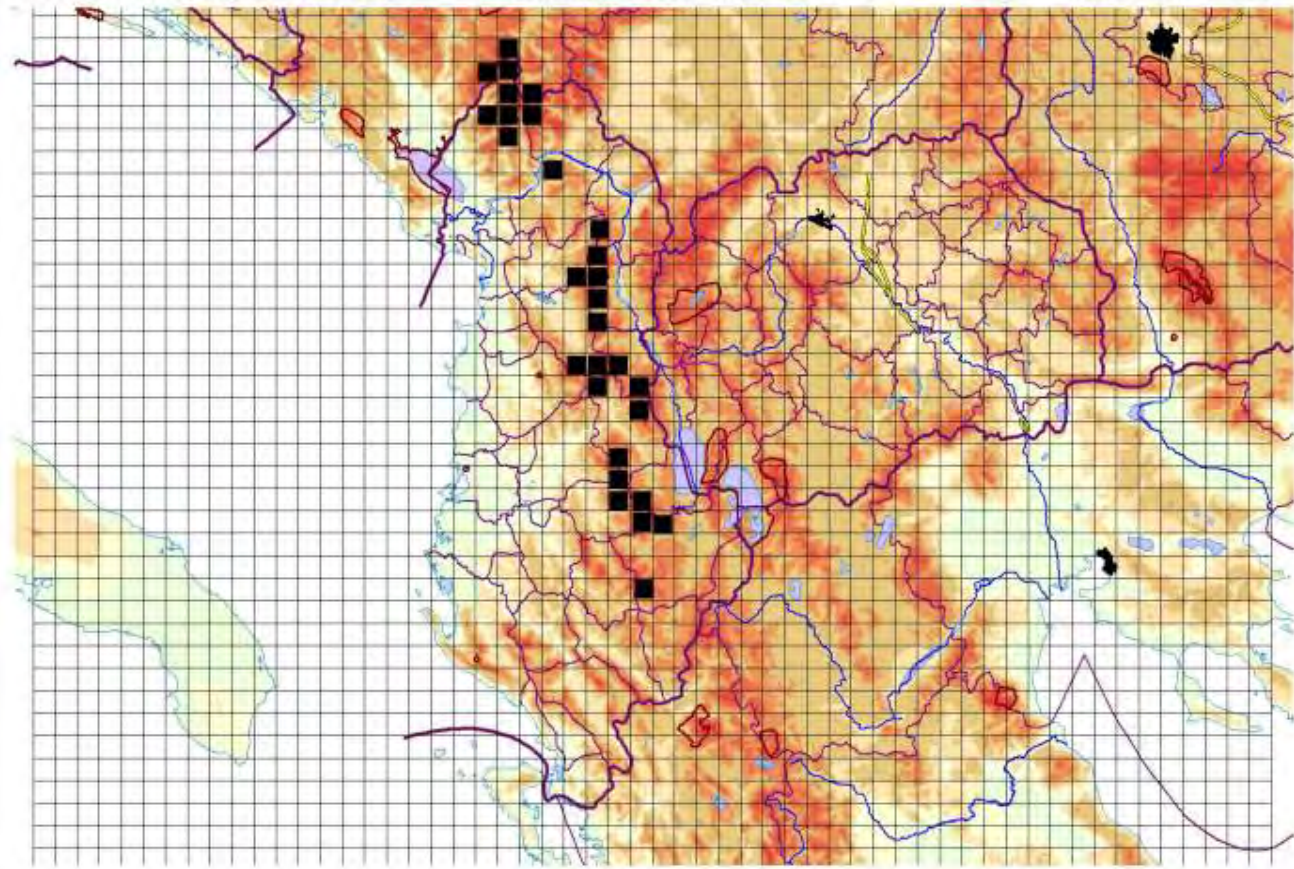
Legend

- |                       |                        |                             |
|-----------------------|------------------------|-----------------------------|
| Strict Nature Reserve | Nature Monument        | Landscape Protected Area    |
| National Park         | Managed Nature Reserve | Multiple Use Protected Area |

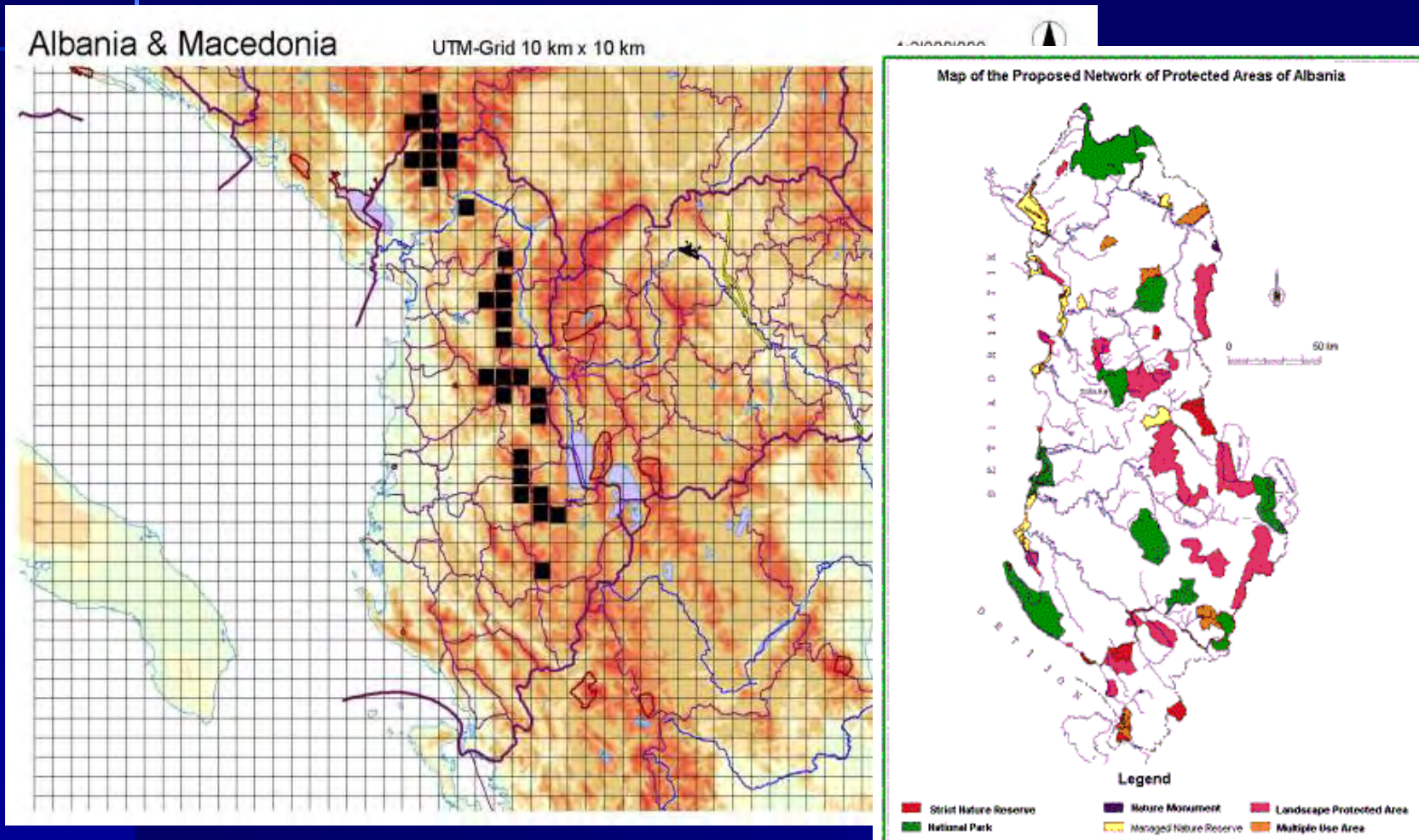
Albania & Macedonia

UTM-Grid 10 km x 10 km

1:2'000'000



# Lynx range and protected areas



# The need for a Lynx Recovery Action Plan (1)

## Main issues:

- the identification of the sites that are critical for the species to be taken under protection and appropriate management;
- increase food availability for the lynx (protection and management of wild prey, particularly ungulates such as roe deer, chamois and wild boar)
- institutional and legislation arrangements and enforcement;

# **The need for a Lynx Recovery Action Plan (cont. 2)**

- **publication of raising awareness materials and organisation of campaigns, focused particularly on the villages surrounding Lynx areas;**
- **considering the compensation policy by the state authority for the farmers, in the cases of damages caused by the Lynx;**
- **Increase coordination and cooperation with other countries, particularly with neighbouring countries**

***Thank you for your attention!***