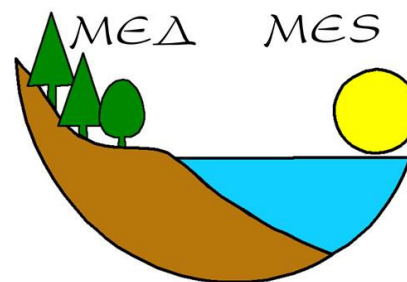
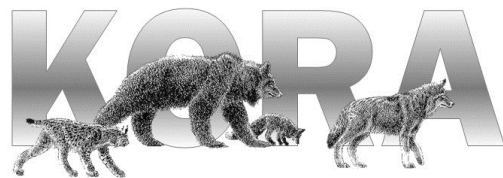


Case study:

Baseline survey for the conservation of the Critically Endangered Balkan lynx

Urs Breitenmoser, Manuela von Arx, Dime Melovski, Aleksandër Trajçe, Aleksandar Stojanov, Gjorgje Ivanov, Kujtim Mersini, Vasko Avukatov, Bledi Hoxha, Slavcho Hristovski, Spase Shumka, Ljupcho Melovski



Case study:

Baseline survey for the conservation of the Critically Endangered Balkan lynx

1. Aims of the survey
2. Survey area and approach
3. Field work
4. Analyses and results

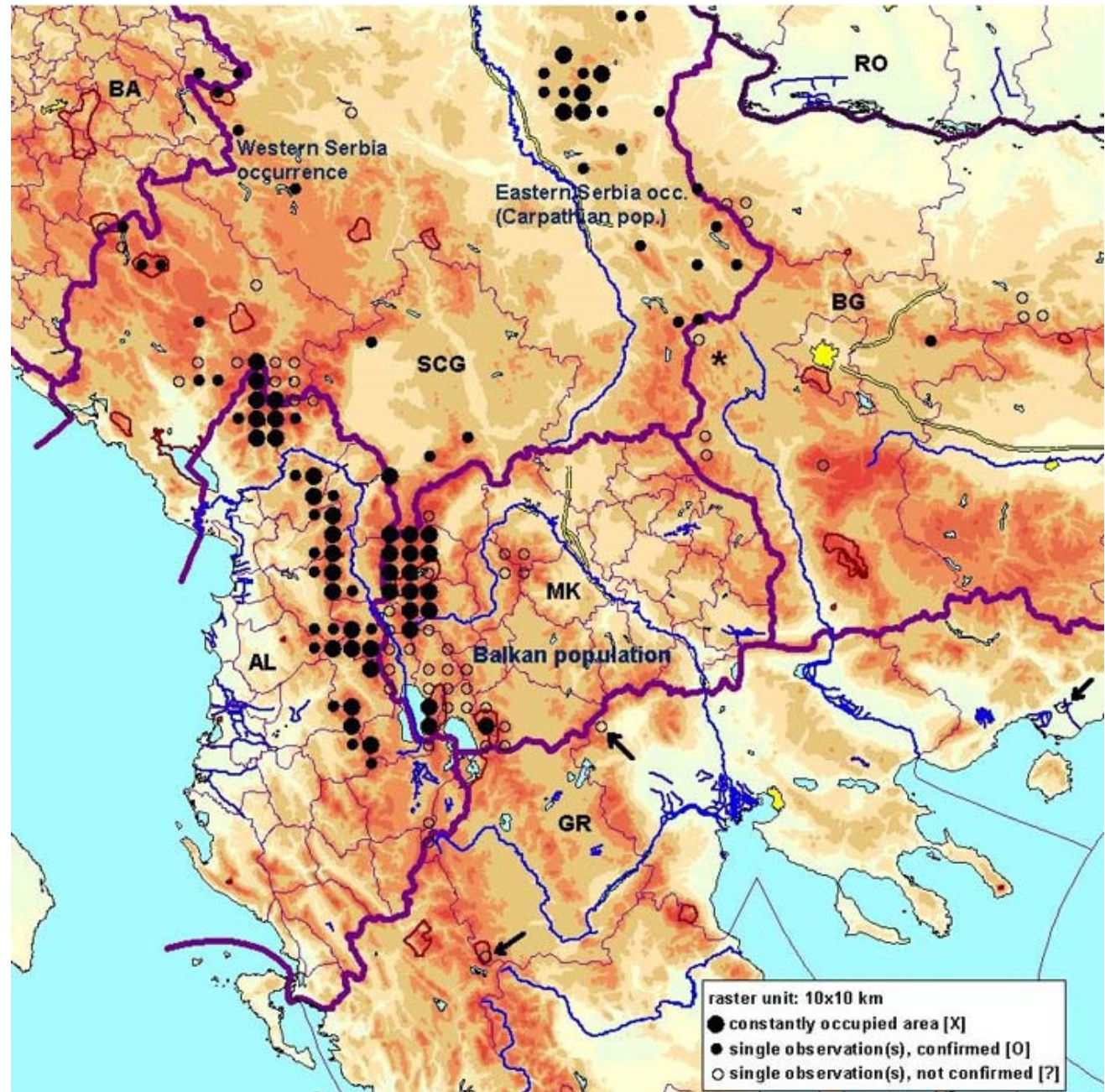


1. Aims of the survey

Balkan lynx

(*Lynx lynx balcanicus*)

- AL, MK, (MN), (KO)
- ELOIS 2004: 80 – 105
- Critically Endangered
- Expert opinion
- No field survey



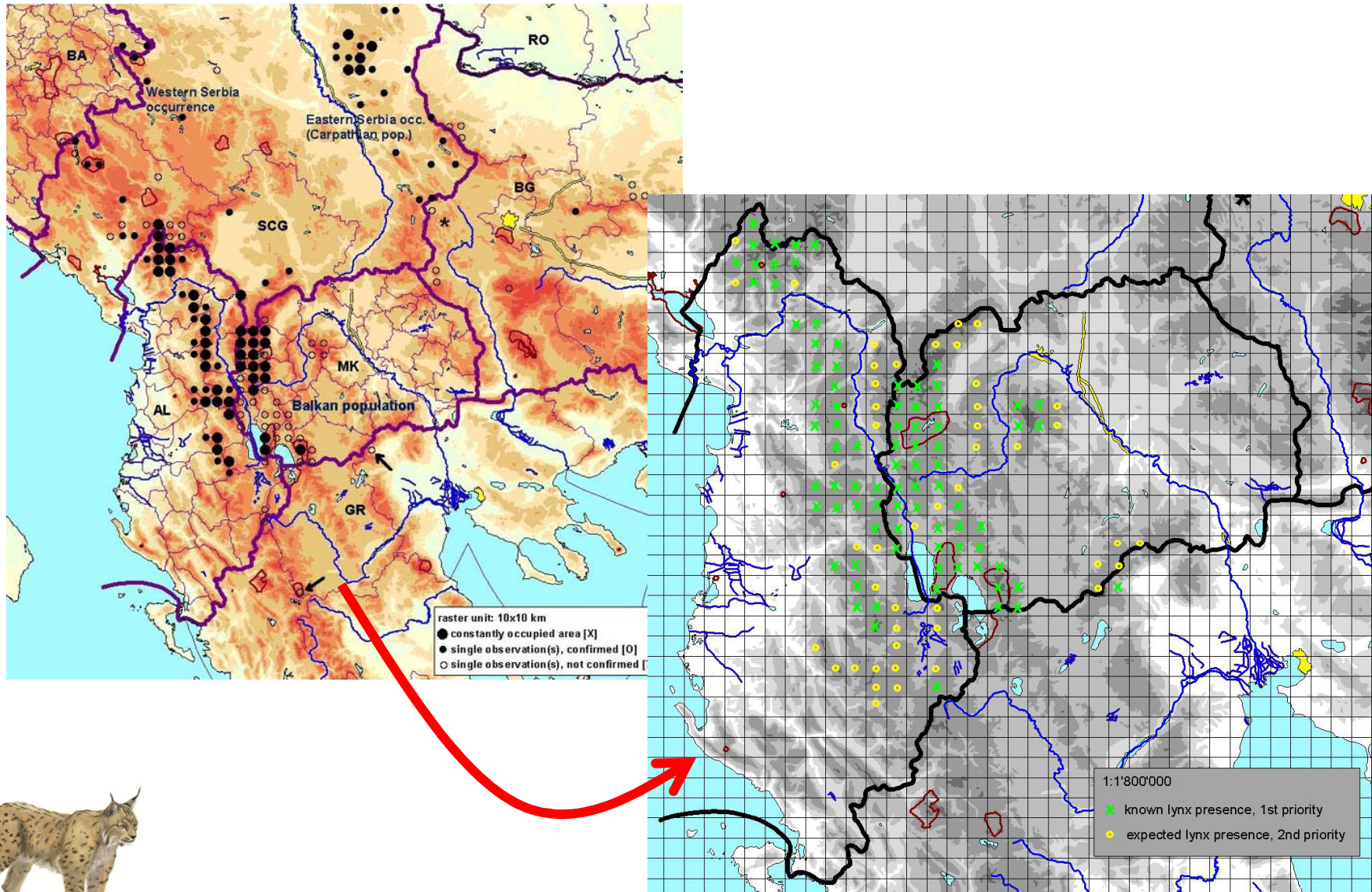
1. Aims of the survey

Collect systematically and consistently information on

- **Lynx presence/absence and perceived trends**
- **Co-predator presence/absence and perceived trends (control)**
- **Potential prey presence/absence and perceived trends**
- **Conflicts between rural people and carnivores/wildlife**
- **Peoples attitudes towards large carnivores**
- **Knowledge of (protective) laws and hunting practices**
- **Livestock populations and livestock husbandry**
- **Living conditions and general use of nature and wildlife**



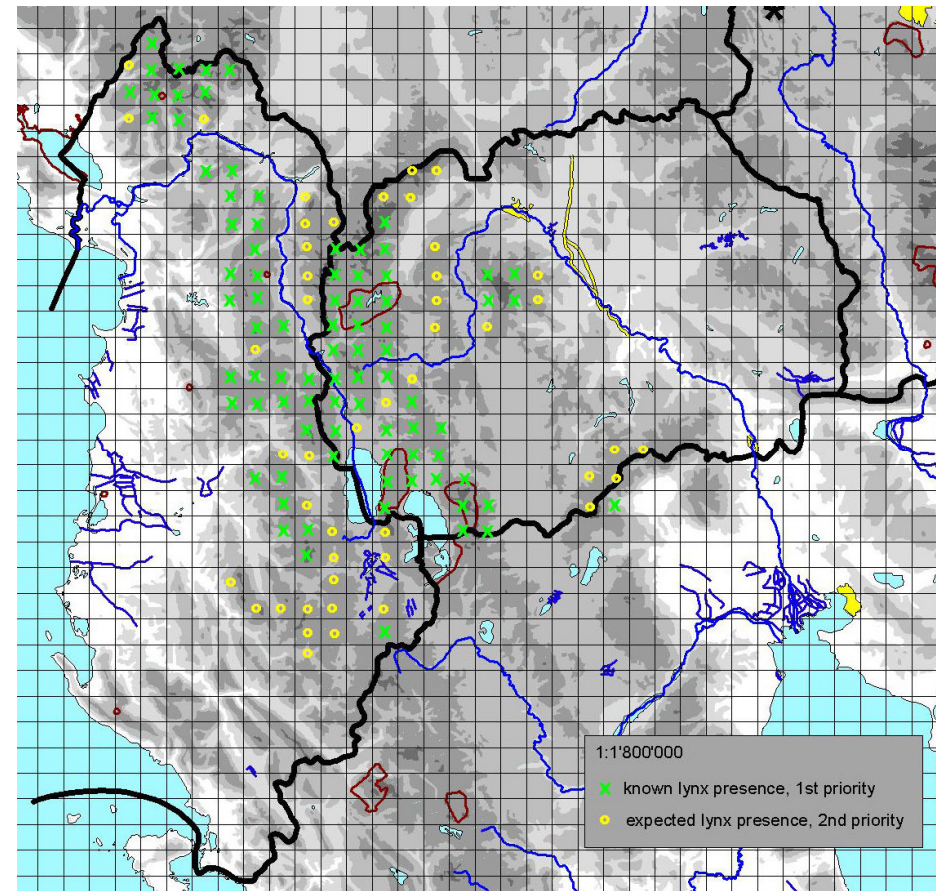
2. Survey area and approach



2. Survey area and approach

Defining the study area

- Study area defined as „ELOIS plus“
- Overlaid with 10x10 km grid → 73 cells in MK and 63 in AL
- ≥ 1 village randomly selected per cell
- ≥ 5 interviews per village or cell
- Predefined target groups: hunters, game wardens, foresters, shepherds, farmers, shop-owners



2. Survey area and approach

Questionnaire with 4 main parts:

1. Presence and distribution of large mammals (carnivores & ungulates)
2. Existence of conflicts related with these species
3. Animal husbandry details
4. Information on socio-economic environment of village



Distribution of species

We are interested in collecting information on the distribution of a range of species in Macedonia / Albania

?		Roe deer	Red deer	Chamois	Wild boar	Hares	Capercaillie / grouse	Red fox	Jackal	Wolf	Stray dogs	Wild	Lynx	Bear
Is it present in your area	y/n													
How common is it	1-3													
Are there more now compared to 5 years ago	+/=/-													
Have any been found dead in last 12 months	p/o/n													
When was the last one found dead	p/o/n													
Have any been killed in last 12 months	p/o/n													
When was the last one killed	p/o/n													
Have any been observed in last 12 months	p/o/n													
When was the last one observed	p/o/n													

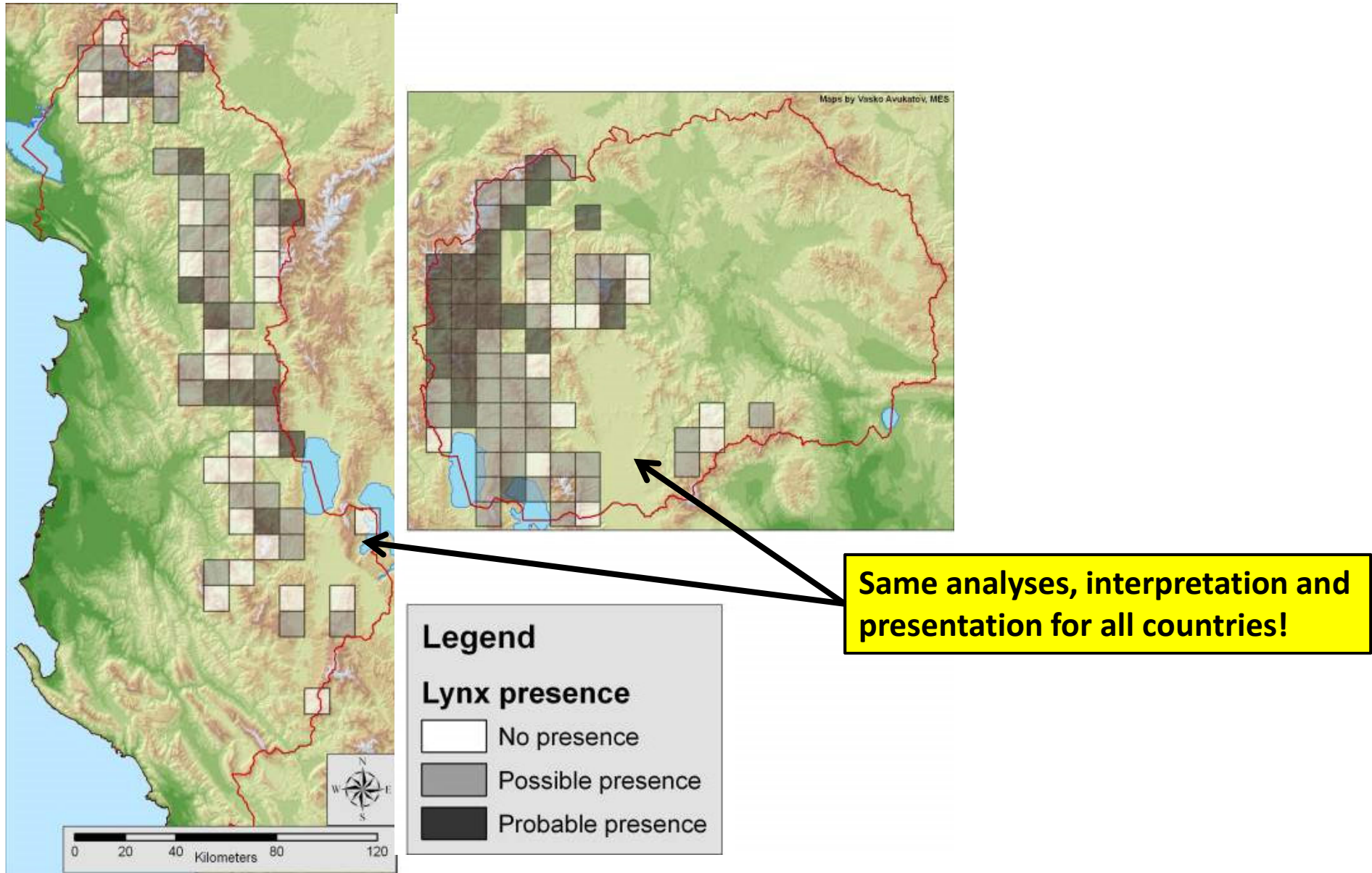


3. Field work

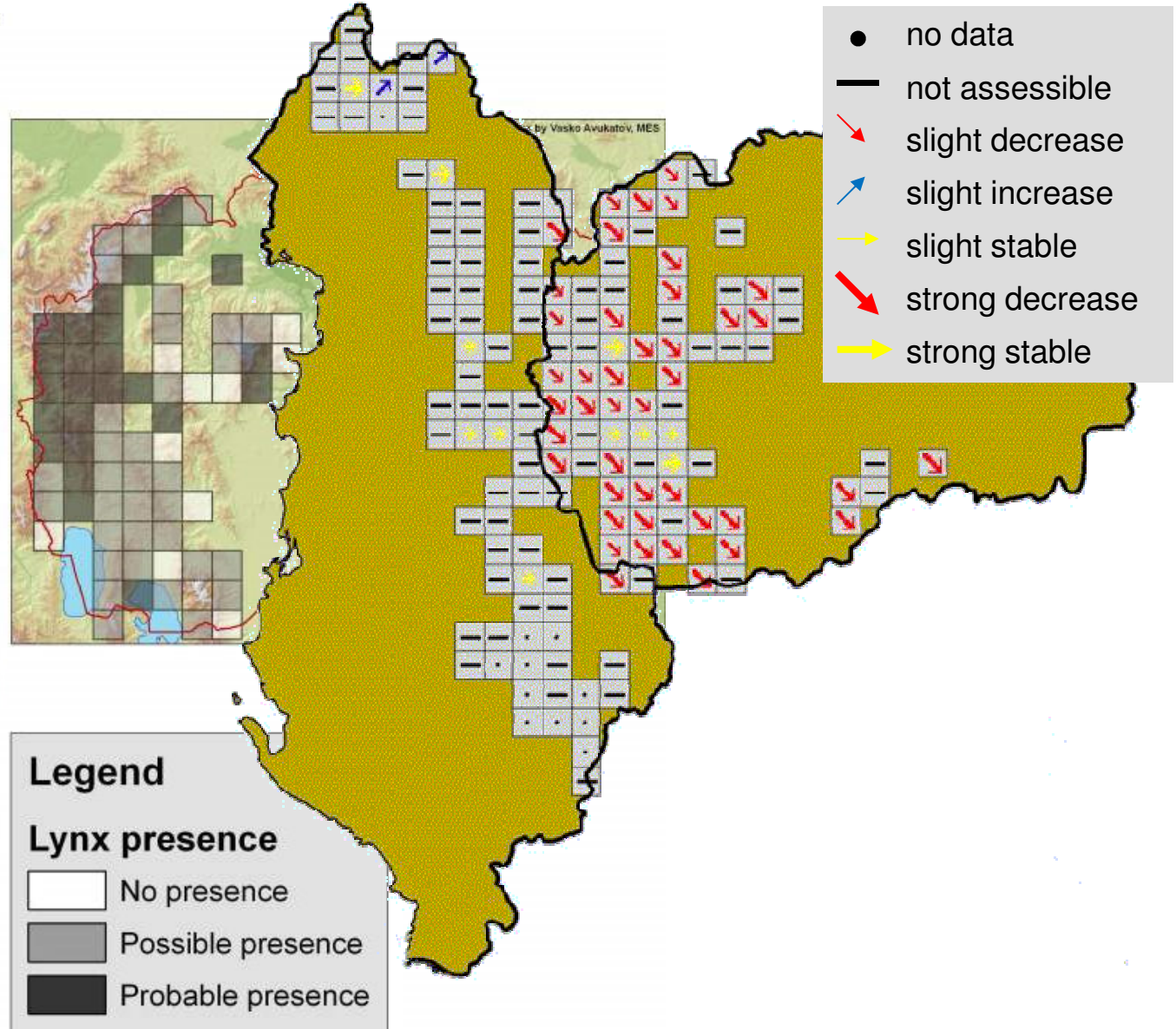
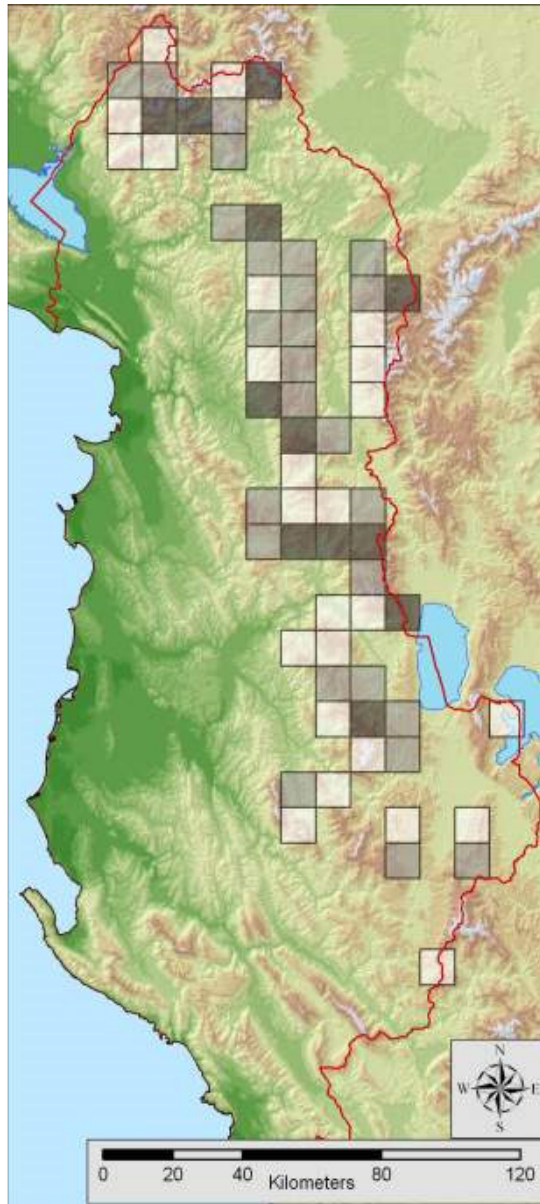
- **Period of survey: August 2006 – July 2007**
- **Sample size: 553 interviews in Macedonia and 320 in Albania**
- **Direct interviews (face to face, questionnaire filled in by researcher)**



4. Analyses and results



4. Analyses and results – lynx distribution and trend



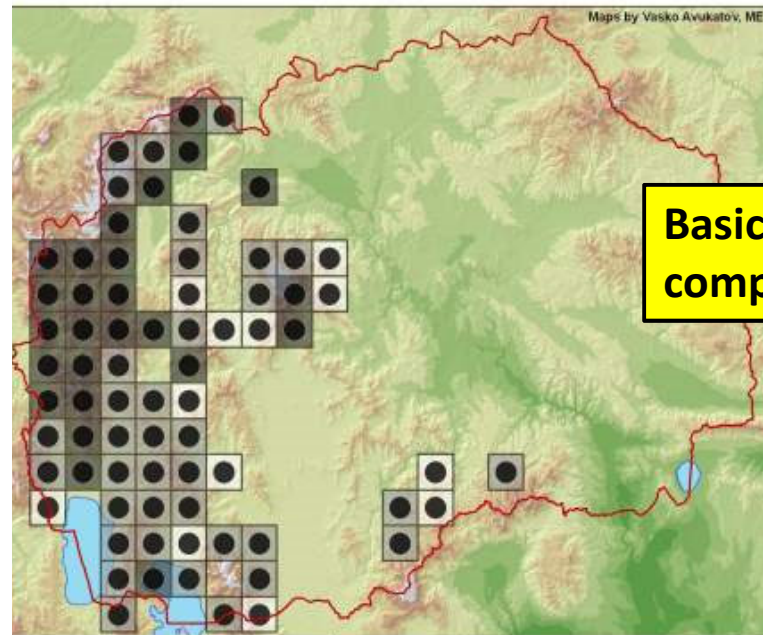
Legend

Lynx presence

- No presence
- Possible presence
- Probable presence

- no data
- not assessible
- slight decrease
- slight increase
- slight stable
- strong decrease
- strong stable

4. Analyses and results – lynx and roe deer presence



Legend

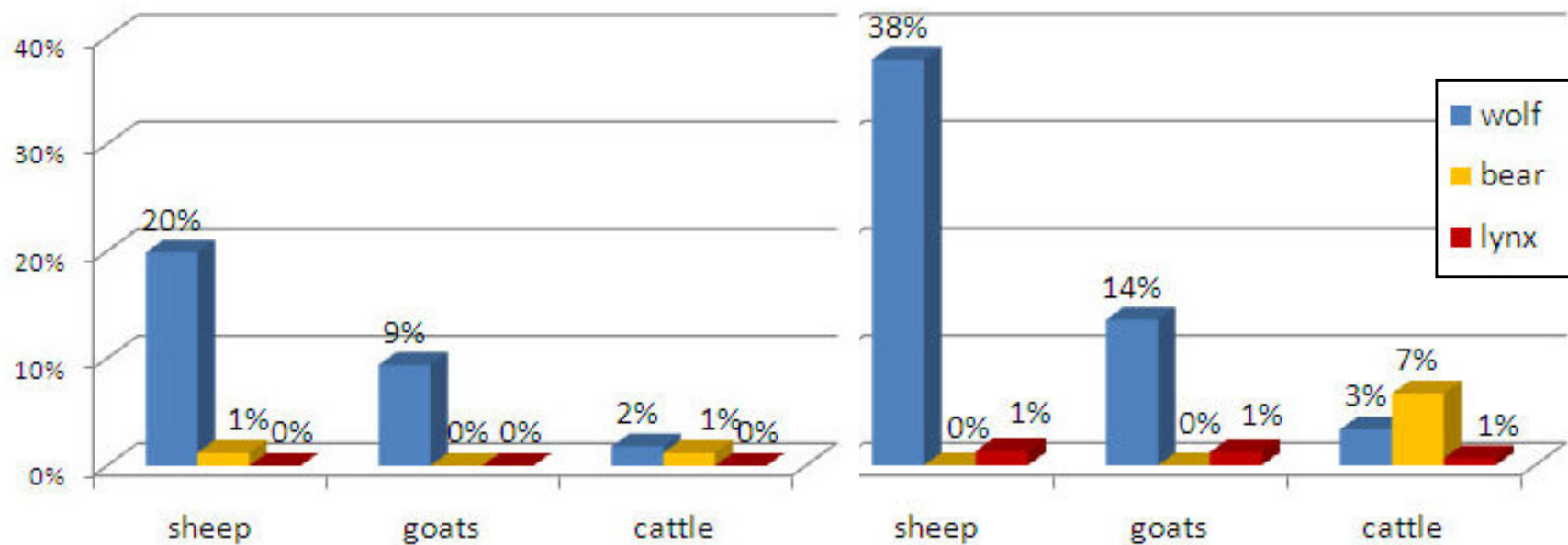
Lynx presence

- No presence
- Possible presence
- Probable presence

Roe deer presence

- No presence
- Possible presence
- Probable presence

4. Analyses and results – depredation on livestock by large carnivores



Albania



Macedonia



Conclusions

Baseline survey

- ... was the first systematic “challenge” of expert opinions;
- ... confirmed some of the knowledge/beliefs, but corrected others;
- ... provided qualitative and semi-quantitative information across the entire potential range;
- ... helped raising awareness among local people and administrators;
- ... introduced researchers and students to local people (and their problems);
- ... allowed to plan the subsequent field work more accurately.

