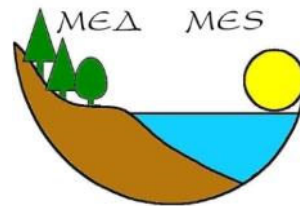
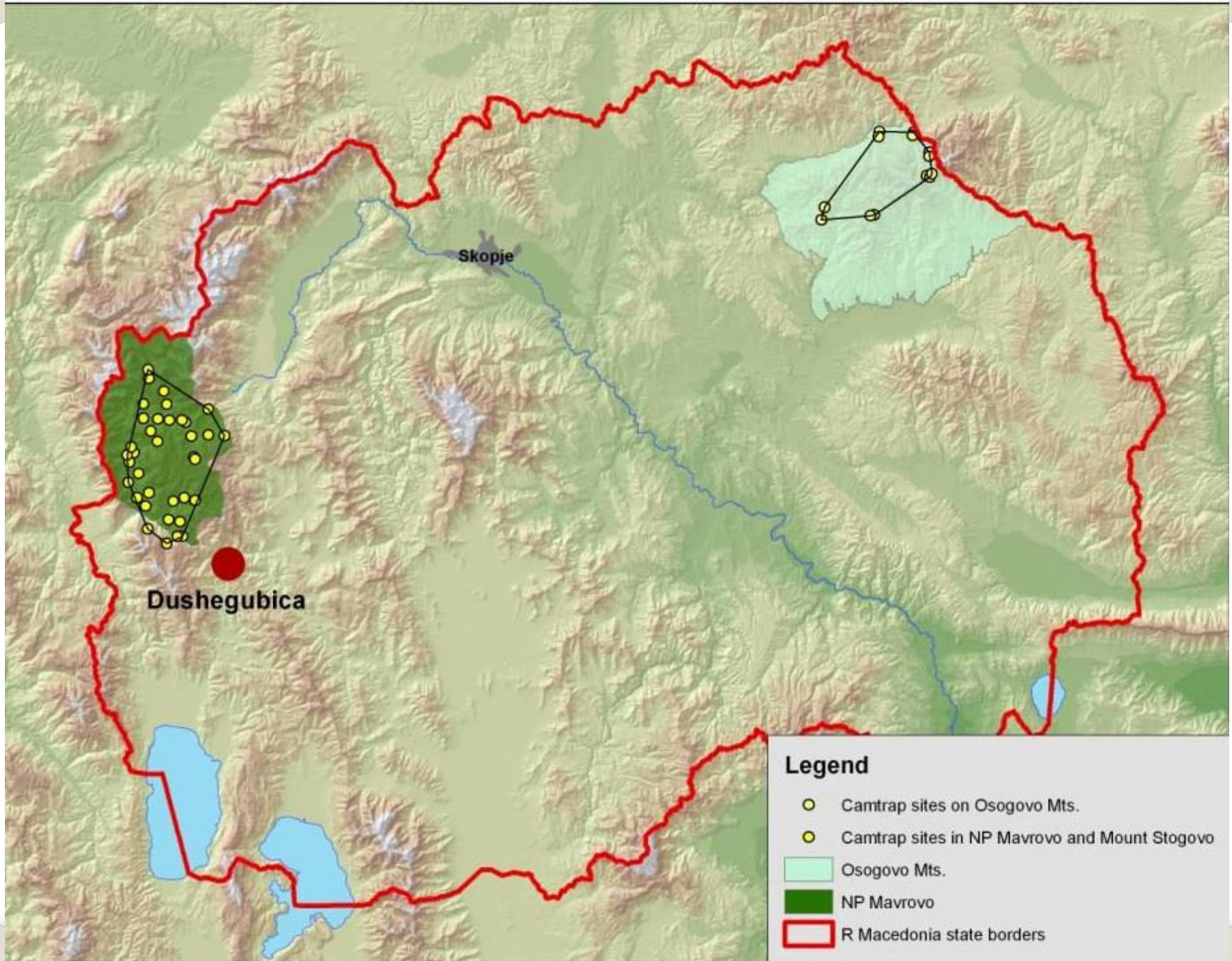


Field season

January – June 2013

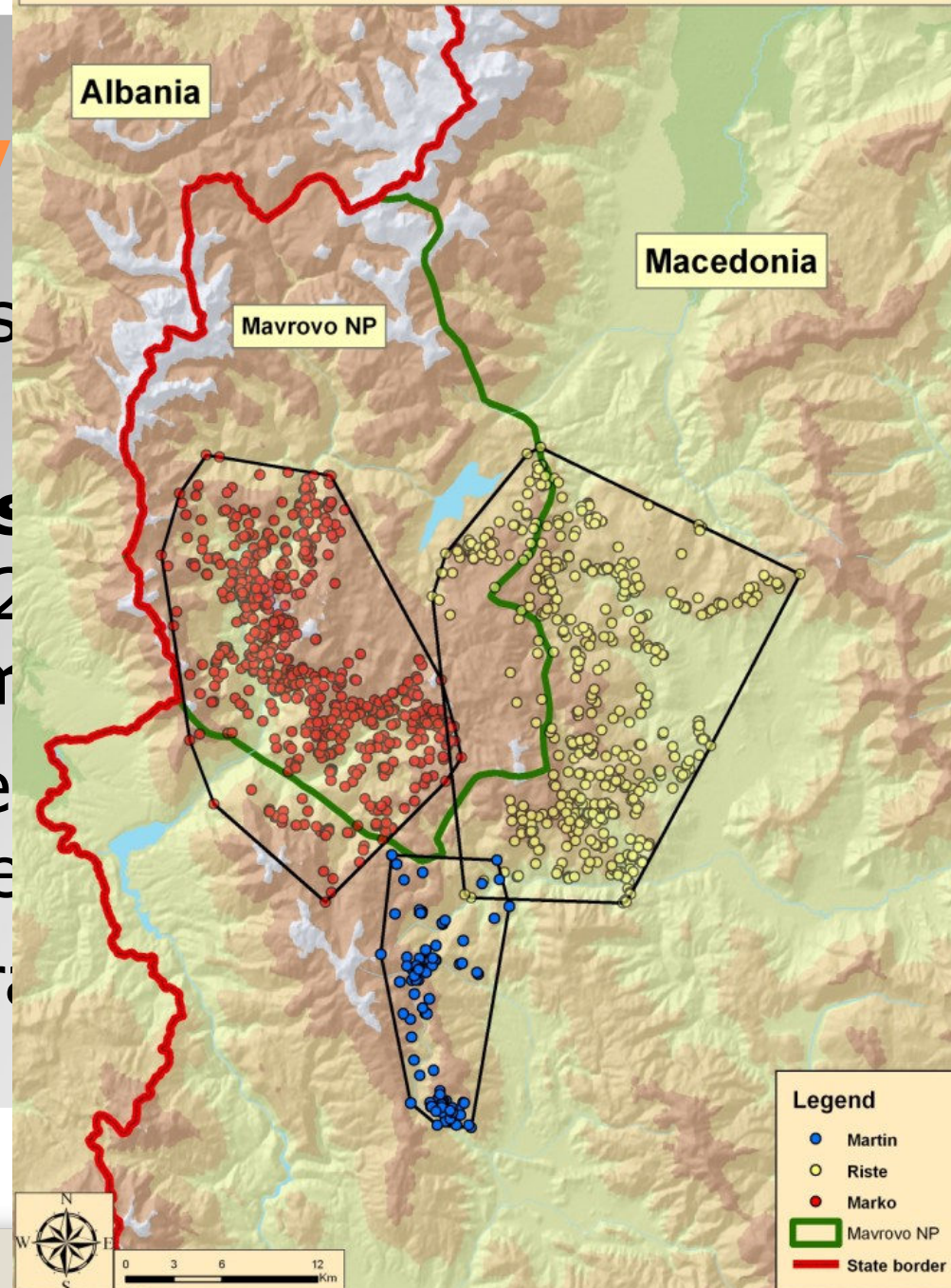




Radio-telemetry study area in Macedonia

Kichevo

- 2 units s
- Results:
badgers
boars, 2
fox, 1 m
- 2 differ
confirme
- 2 camera



er; 12
wild
wolf, 1

ste –
months)



3/19/2012 9:03 PM



1/28/2013 1:20 AM

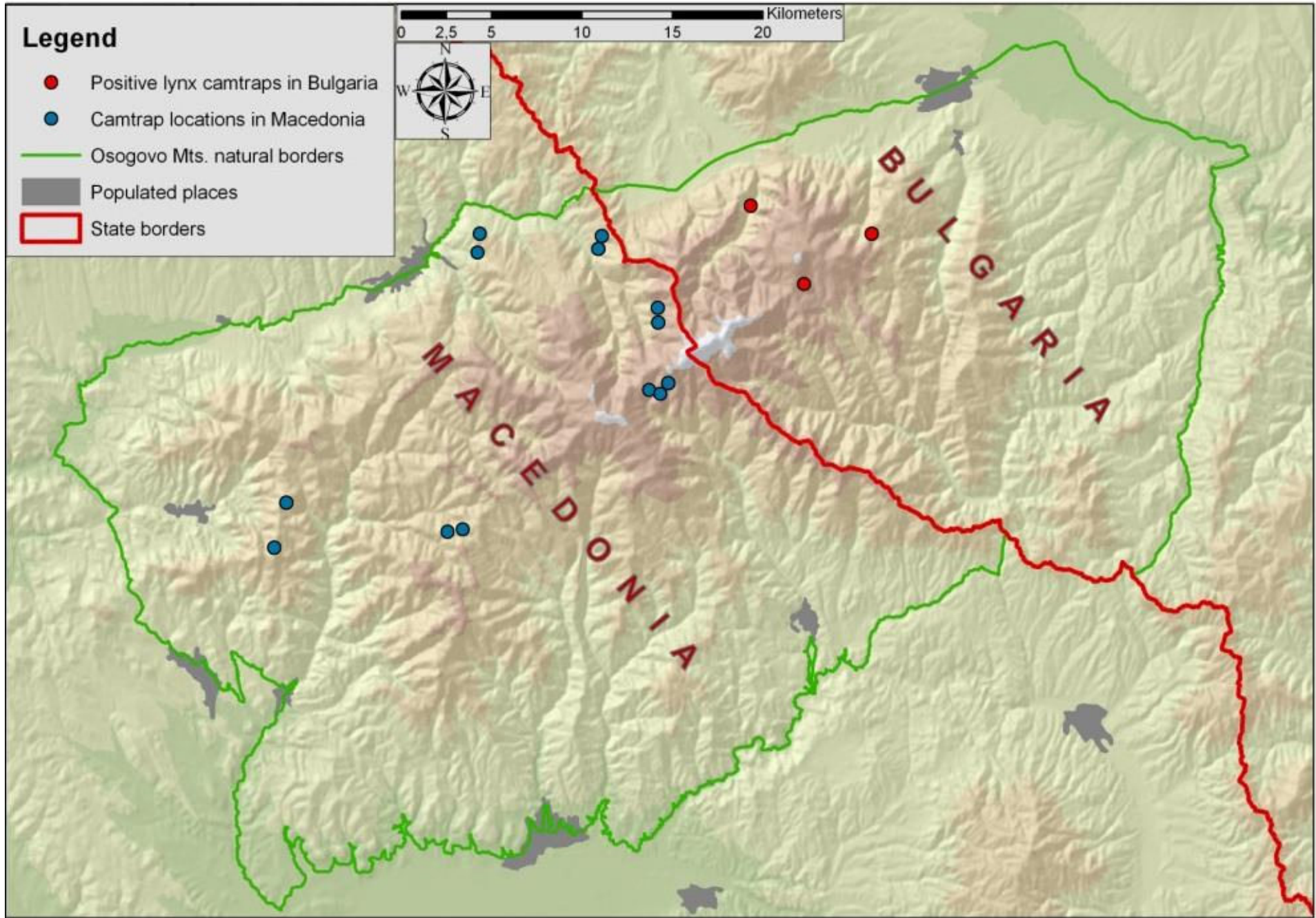


Slicno so L_2012



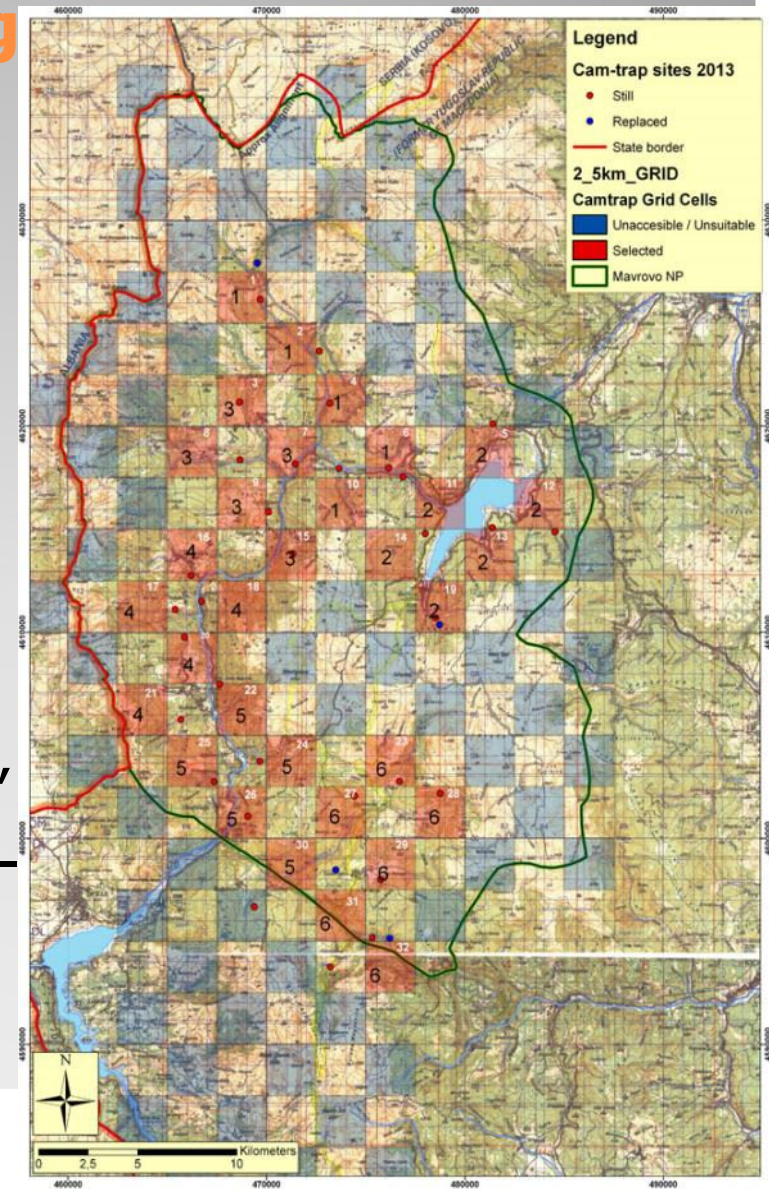
2/16/2013 7:22 PM





Intensive camera-trapping study in Mavrovo NP

- Study period: 09th of March – 8th of May 2013 (60 trap nights)
- Study area: 436 km²
- 64 camera traps at 32 different sites
- Potential sampling effort was 1920 trap-night, but the “real” sampling effort was 1813 trap-nights or 94.4% of the potential



- Results:
- - 60 lynx pictures at 13 different sites
- - 9 different individuals identified (7 new and 2 from the previous studies)
- - Model $M(h)$ of the fitted data the best with population estimation of 12 ± 2.49
- Approximate 95% confidence interval was 10-21
- Corresponding density was 1.57 ± 0.32 ind/100km²
- Picture of juvenile lynx – prove for reproduction



- Apart of lynx, we got 1727 pictures of other large mammals:

- - brown bear 130

- - wolf 80

- - red fox 194

- - wild cat 70

- - marten 142

- - badger 421

- red deer 5

- roe deer 115

- chamois 47

- wild boar 90

- brown hare 433





Ambush 4/25/2013 6:50 AM



4/5/2013 7:33 AM

Cuddeback



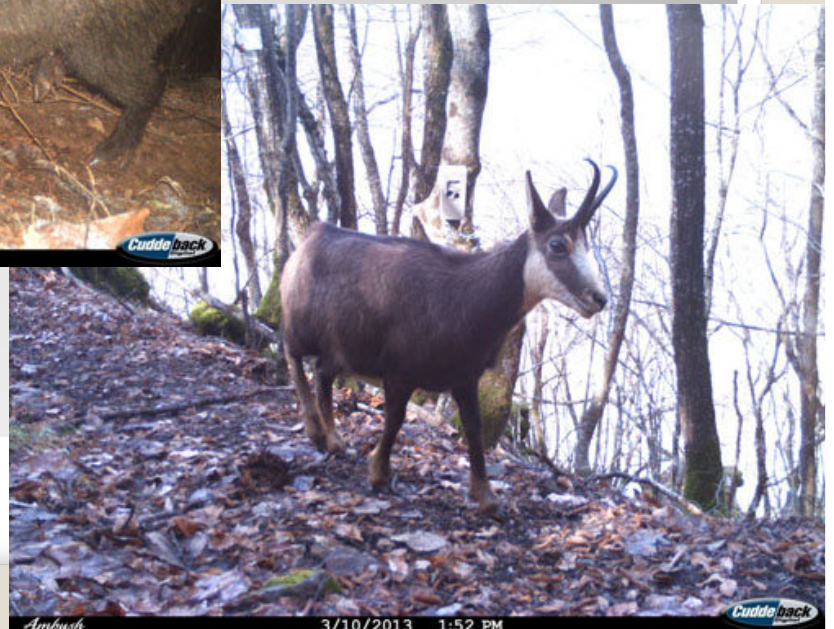
Ambush 3/15/2013 10:10 PM

Cuddeback



Ambush 5/3/2013 7:05 AM

Cuddeback



Ambush 3/10/2013 1:52 PM

Cuddeback

- Good cooperation with the rangers from Mavrovo NP!
- Volunteers actively involved in the study!

