

Pictures from the Field Survey, Mavrovo NP, March 20-25 2006

Tuesday, March 21, 2006 – Tresonče, Alilica cave



Beech and oak were the predominating tree species during the transect from Tresonče to the Alilica cave.



Footprint of a wild boar *Sus scrofa*.



A hare *Lepus europaeus* hide.

Wednesday, March 22, 2006 – Šuntevsi Rid, Vlainica, Leunovo



The group snow-tracking through the beech forest at the southern shore of Mavrovo lake.



Only hare (Fig.), fox and badger tracks were found.



Hare scats art.

Thursday, March 23, 2006 – Sence



Mixed forests and partly rocky areas with caves stretch above the village Sence.



The group identifies scats (of a roe deer) with the help of the Field Handbook.



Bear *Ursus arctos* tracks.



Chamois *Rupicapra r.* tracks.



Big canid, probably *Canis lupus*.

Friday, March 24, 2006 – village Bituše



Beech forest with still a lot of snow.



Break after quite an unsuccessful tracking day.

Saturday, March 25, 2006 – between the dam and Kičinica (Kičinicka Češma)



Mixed fir and beech forests form the habitat in this area.



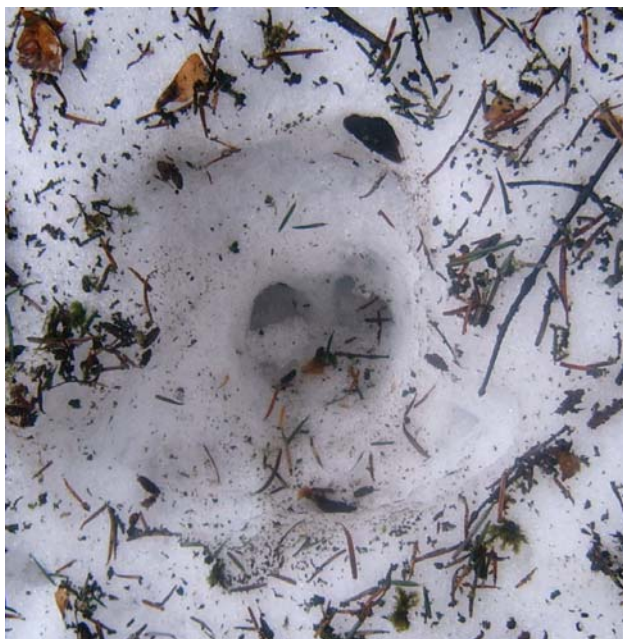
Finally, tracks of lynx *Lynx lynx* were encountered.



The trails of a lynx and a hare are crossing each other.



They were actually even two lynx individuals, separating for some meters from time to time.



The footprint of a roe deer *Capreolus capreolus*.



Backtracking of the lynx tracks ended in the valley bottom.